



**MANDRINI ATTACCO  
PSC - ECA ISO 26623-1**

TOOLHOLDERS  
PSC - ECA ISO 26623-1

**11A**



# MANDRINI ATTACCO PSC – ECA ISO 26623-1

TOOLHOLDERS PSC – ECA ISO 26623-1



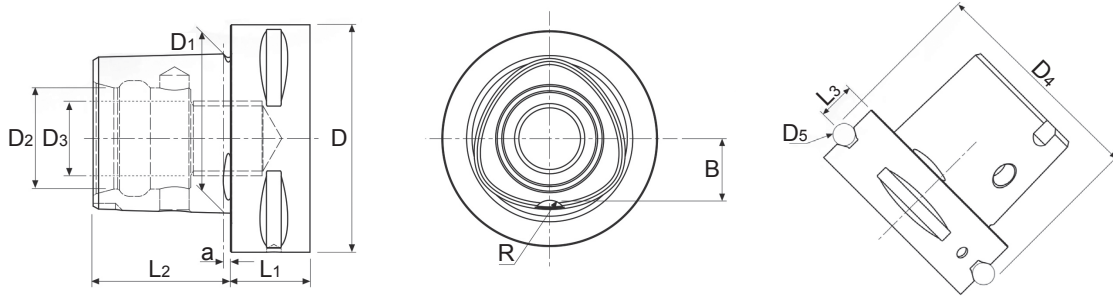
**MANDRINI PORTAPINZE**  
ER TOOLHOLDERS



**RIDUTTORI CONO MORSE**  
MORSE TAPER ADAPTERS

**11A**

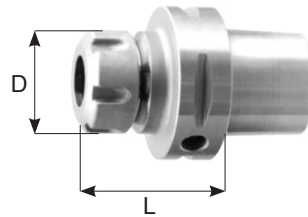
**Tabella tecnica**  
Data sheet



PSC	D	D1	D2	D3	D4	D5	L1 min	L2	L3	a	B	R
32	32	22	15	M12 x 1.5	39.0	5	15	19	6	2.5	9.0	3
40	40	28	18	M14 x 1.5	46.0	5	20	24	8	2.5	11.0	3
50	50	35	21	M16 x 1.5	59.3	7	20	30	10	3.0	14.0	4
63	63	44	28	M20 x 2.0	70.7	7	22	38	12	3.0	18.0	5
80	80	55	32	M20 x 2.0	86.0	7	30	48	12	3.0	22.2	6
100	100	72	43	M24 x 2.0	110.0	10	32	60	16	3.0	29.2	6

**Mandrini portapinza con ghiera STANDARD**

Collet chucks STANDARD nut


**C40 / 50 / 63 / 80 / 100**

CODICE	FAM	CAP	D	L	EUR
C40.ER16.L70	14	1 + 10	28	70	
C40.ER25.L52		1 + 20	42	52	
C40.ER32.L54		2 + 22	50	54	
C50.ER16.L100		1 + 10	28	100	
C50.ER25.L55		1 + 20	42	55	
C50.ER32.L57		2 + 22	50	57	
C50.ER32.L100		2 + 22	50	100	
C63.ER16.L100		1 + 10	28	100	
C63.ER20.L60		1 + 14	34	60	
C63.ER20.L100		1 + 14	34	100	
C63.ER25.L60		1 + 20	42	60	
C63.ER25.L100		1 + 20	42	100	
C63.ER32.L60		2 + 22	50	60	
C63.ER32.L100		2 + 22	50	100	
C63.ER40.L65	3 + 30	63	65		
C80.ER25.L70	3	1 + 20	42	70	
C80.ER32.L70		2 + 22	50	70	
C80.ER32.L160		2 + 22	50	160	
C80.ER40.L70		3 + 30	63	70	
C80.ER40.L160		3 + 30	63	160	
C100.ER32.L160		2 + 22	50	160	

**Mandrini riduttori cono morse DIN/228-B per Punta**

Morse taper DIN/228-B for Drills


**C50 / 63 / 80 / 100**

CODICE	FAM	A	L	D1	EUR
C50.CM2B.L110	13	CM2	110	32	
C50.CM2B.L130		CM3	130	40	
C63.CM2B.L110		CM2	110	32	
C63.CM3B.L130		CM3	130	40	
C63.CM4B.L150		CM4	150	52	
C80.CM3B.L120		CM3	120	40	
C80.CM4B.L140		CM4	140	52	
C80.CM5B.L160		CM5	160	63	
C100.CM3B.L130		CM3	130	40	
C100.CM4B.L150		CM4	150	52	
C100.CM5B.L175		CM5	175	63	