



**MANDRINI ATTACCO HSK
FORMA - A / C / E / F**

TOOLHOLDERS
HKS FORM - A / C / E / F

9C-1



MANDRINI ATTACCO HSK FORMA - A / C / E / F

TOOLHOLDERS HKS FORM - A / C / E / F



MANDRINI IDRAULICI
HYDRAULIC CHUCKS

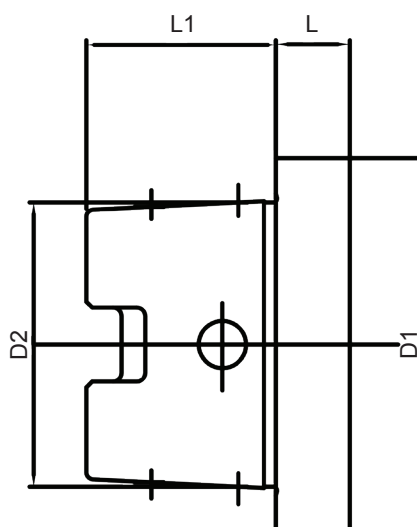
9C-1

Tabella tecnica

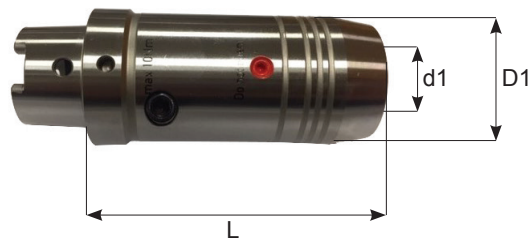
Data sheet

FORMA = C

C



| FORMA | D1 | D2 | L1 | L |
|-------|----|----|----|------|
| HSK-C | 25 | 19 | 13 | 10 |
| | 32 | 24 | 16 | 10 |
| | 40 | 30 | 20 | 10 |
| | 50 | 38 | 25 | 12.5 |
| | 63 | 48 | 32 | 12.5 |

Mandrini idraulici
 Hydraulic chucks

HSK-C / 40 / 50 / 63

| CODICE | FAM | d | RPM | L | D1 | EUR |
|------------------|-----|----|--------|-----|------|-----|
| HSK40C.H60.HD6 | 5 | 6 | 25.000 | 60 | 26 | |
| HSK40C.H60.HD8 | | 8 | | 60 | 28 | |
| HSK40C.H65.HD10 | | 10 | | 65 | 30 | |
| HSK40C.H70.HD12 | | 12 | | 70 | 32 | |
| HSK50C.H60.HD6 | | 6 | | 60 | 26 | |
| HSK50C.H60.HD8 | | 8 | | 60 | 28 | |
| HSK50C.H65.HD10 | | 10 | | 65 | 30 | |
| HSK50C.H75.HD12 | | 12 | | 75 | 32 | |
| HSK50C.H75.HD14 | | 14 | | 75 | 34 | |
| HSK50C.H80.HD16 | | 16 | | 80 | 38 | |
| HSK50C.H80.HD18 | | 18 | | 80 | 40 | |
| HSK50C.H80.HD20 | | 20 | | 80 | 42 | |
| HSK50C.H90.HD25 | | 25 | | 90 | 49.5 | |
| HSK63C.H60.HD6 | | 6 | | 60 | 26 | |
| HSK63C.H60.HD8 | | 8 | | 60 | 28 | |
| HSK63C.H65.HD10 | | 10 | | 65 | 30 | |
| HSK63C.H75.HD12 | | 12 | | 75 | 32 | |
| HSK63C.H75.HD14 | | 14 | | 75 | 34 | |
| HSK63C.H80.HD16 | | 16 | | 80 | 38 | |
| HSK63C.H80.HD18 | | 18 | | 80 | 40 | |
| HSK63C.H80.HD20 | | 20 | | 80 | 42 | |
| HSK63C.H95.HD25 | | 25 | | 95 | 58 | |
| HSK63C.H100.HD32 | | 32 | | 100 | 62 | |