



**MANDRINI ATTACCO HSK
FORMA - A / C / E / F**

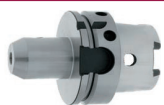
TOOLHOLDERS
HKS FORM - A / C / E / F

9A-6



MANDRINI ATTACCO HSK FORMA - A / C / E / F

TOOLHOLDERS HKS FORM - A / C / E / F

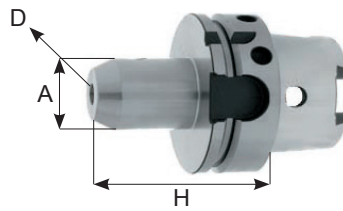


MANDRINI PORTAFRESE WELDON
WELDON END MILL HOLDERS

9A-6

Portafrese Weldon DIN/1835-B

End mill holders for DIN/1835-B



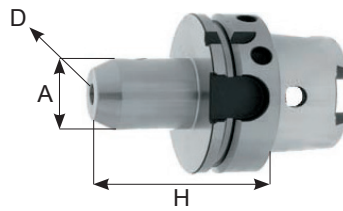
HSK-A / 50 / 63 / 100

CODICE	FAM	D	FORMA	H	A	EUR		
HSK50A.H65.WE6	1-11	6	HSK50-A	65	25			
HSK50A.H65.WE8		8		65	28			
HSK50A.H65.WE10		10		65	35			
HSK50A.H80.WE12		12		80	42			
HSK50A.H80.WE14		14		80	44			
HSK50A.H80.WE16		16		80	48			
HSK50A.H80.WE18		18		80	50			
HSK50A.H80.WE20		20		80	52			
HSK63A.H65.WE6		1-11		6	HSK63-A	65	25	
HSK63A.H100.WE6						100		
HSK63A.H160.WE6			160					
HSK63A.H65.WE8	65		28					
HSK63A.H100.WE8	100							
HSK63A.H160.WE8	160							
HSK63A.H65.WE10	65			35				
HSK63A.H100.WE10	100							
HSK63A.H160.WE10	160							

DISPONIBILI IN ALTRE MISURE, CONTATTA IL COMMERCIALE PER MAGGIORI DETTAGLI
AVAILABLE IN OTHERS MEASURES CALL YOUR DEALER FOR MORE DETAILS

Portafrese Weldon DIN/1835-B

End mill holders for DIN/1835-B

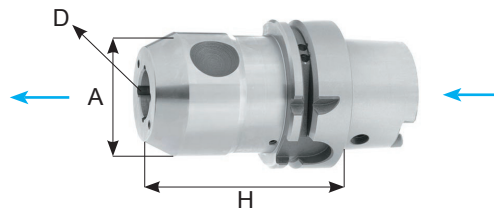

HSK-A / 63 / 100

CODICE	FAM	D	FORMA	H	A	EUR	
HSK63A.H80.WE12	1	12	HSK63-A	80	42		
HSK63A.H100.WE12				100			
HSK63A.H160.WE12				160			
HSK63A.H80.WE14				80			
HSK63A.H100.WE14		100		44			
HSK63A.H160.WE14		160					
HSK63A.H80.WE16		80		48			
HSK63A.H100.WE16		100					
HSK63A.H160.WE16		160					
HSK63A.H80.WE18		1		18	80	50	
HSK63A.H100.WE18					100		
HSK63A.H160.WE18				160			
HSK63A.H80.WE20				80	52		
HSK63A.H100.WE20		100					
HSK63A.H160.WE20		160					
HSK63A.H110.WE25		1		25	110	65	
HSK63A.H160.WE25					160		
HSK63A.H110.WE32				32	110	72	
HSK63A.H160.WE32					160		
HSK63A.H125.WE40		11		40	125	80	
HSK100A.H80.WE6	1	6	HSK100-A	80	25		
HSK100A.H80.WE8		8		80	28		
HSK100A.H80.WE10		10		80	35		
HSK100A.H80.WE12		12		80	42		
HSK100A.H80.WE14		14		80	44		
HSK100A.H100.WE16		16		100	48		
HSK100A.H100.WE18		18		100	50		
HSK100A.H100.WE20		20		100	52		
HSK100A.H100.WE25		25		100	65		
HSK100A.H100.WE32		32		100	72		
HSK100A.H105.WE40		8		40	120	80	
HSK100A.H130.WE50				50	130	100	

DISPONIBILI IN ALTRE MISURE, CONTATTA IL COMMERCIALE PER MAGGIORI DETTAGLI
 AVAILABLE IN OTHERS MEASURES CALL YOUR DEALER FOR MORE DETAILS

Portafrese Weldon con passaggio del refrigerante DIN/1835-B

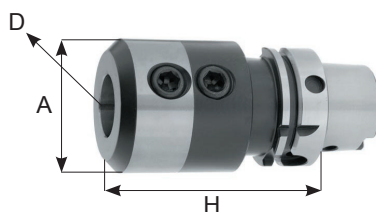
End mill holders with coolant channels DIN/1835-B


HSK-A / 63 / 100

CODICE	FAM	D	FORMA	H	A	EUR
HSK63A.H75.WE6C	1	6	HSK63-A	75	25	
HSK63A.H75.WE8C		8		75	28	
HSK63A.H75.WE10C		10		75	35	
HSK63A.H80.WE12C		12		80	42	
HSK63A.H80.WE14C		14		80	44	
HSK63A.H80.WE16C		16		80	48	
HSK63A.H80.WE18C		18		80	50	
HSK63A.H80.WE20C		20		80	52	
HSK63A.H110.WE25C		25		110	65	
HSK63A.H110.WE32C		32		110	72	
HSK63A.H120.WE40C		40	120	80		
HSK100A.H75.WE6C		HSK100-A	6	75	25	
HSK100A.H75.WE8C			8	75	28	
HSK100A.H80.WE10C			10	80	35	
HSK100A.H90.WE12C			12	90	42	
HSK100A.H90.WE14C			14	90	44	
HSK100A.H100.WE16C			16	100	48	
HSK100A.H100.WE18C			18	100	50	
HSK100A.H100.WE20C			20	100	52	
HSK100A.H100.WE25C			25	100	65	
HSK100A.H100.WE32C	32		100	72		
HSK100A.H120.WE40C	40	105	80			

Portafrese Weldon Whistle-Notch

Whistle-Notch end mill holders


HSK-A / 63 / 100

CODICE	FAM	D	FORMA	H	A	EUR
HSK63A.H80.WHN6	1	6	HSK63-A	80	25	
HSK63A.H80.WHN8		8		80	28	
HSK63A.H80.WHN10		10		80	35	
HSK63A.H90.WHN12		12		90	42	
HSK63A.H90.WHN14		14		90	44	
HSK63A.H100.WHN16		16		100	48	
HSK63A.H100.WHN18		18		100	50	
HSK63A.H100.WHN20		20		100	52	
HSK63A.H110.WHN25		25		110	65	
HSK63A.H110.WHN32		32		110	72	
HSK100A.H90.WHN6		HSK100-A	6	90	25	
HSK100A.H90.WHN8			8	90	28	
HSK100A.H90.WHN10			10	90	35	
HSK100A.H100.WHN12			12	100	42	
HSK100A.H100.WHN14			14	100	44	
HSK100A.H100.WHN16			16	100	48	
HSK100A.H100.WHN18			18	100	50	
HSK100A.H110.WHN20			20	110	52	
HSK100A.H120.WHN25			25	120	65	
HSK100A.H120.WHN32			32	120	72	
HSK100A.H120.WHN40	40	120	80			