



**MANDRINI
ATTACCO DIN/69871 -
DOPPIO CONTATTO -
ANSI B 5.50**

TOOLHOLDERS
DIN/69871 - DUAL DRIVE -
ANSI B 5.50

7M



MANDRINI ATTACCO DIN/69871 - DOPPIO CONTATTO - ANSI B 5.50

TOOLHOLDERS DIN/69871 - DUAL DRIVE - ANSI B 5.50

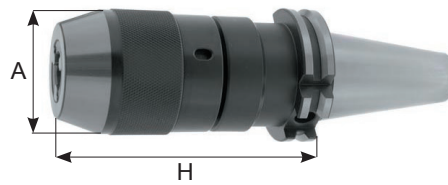


MANDRINI PORTAPUNTE
DRILL CHUCKS

7M

Mandrini portapunte con chiavi a gancio

Drill chuck with hook wrench

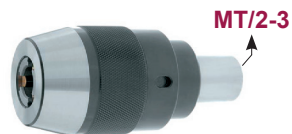


TC30 / 40 / 50

CODICE	FAM	CAP	H	A	EUR
TC30.H80.DCK8	1	0.5 ÷ 8	80	36	
TC40.H75.DCK8			75	36	
TC40.H100.DCK13		1 ÷ 13	100	50	
TC40.H115.DCK16		2.5 ÷ 16	115	58	
TC50.H88.DCK13		1 ÷ 13	88	50	
TC50.H90.DCK16		2.5 ÷ 16	90	58	

Portapunte con chiavi a gancio

Drill chuck with hook wrench heads



DCK

CODICE	FAM	CAP	EUR
DCK8.MT2S	1	0.5 ÷ 8	
DCK13.MT3S		1 ÷ 13	
DCK16.MT3S		2.5 ÷ 16	

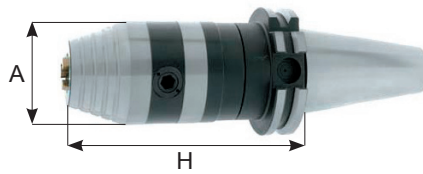
Chiavi a settore per mandrini portapunte

Hook Wrenches
for drill chucks

CODICE	EUR
CH.DC8	
CH.DC10	
CH.DC13	
CH.DC16	



Mandrini portapunte a forte serraggio con chiavi esagonali
Exagonal key look drill chucks titanium jaws



TC40 / 50

CODICE	FAM	CAP	FORMA	H	A	EUR
TC40.H115.CP13S	1	1 ÷ 13	AD	115	50	
TC40.H120.CP16S		2.5 ÷ 16		120		
TC50.H103.CP13S		1 ÷ 13		103		
TC50.H108.CP16S		2.5 ÷ 16		108		

Portapunte a forte serraggio
Drill chuck heads



CP

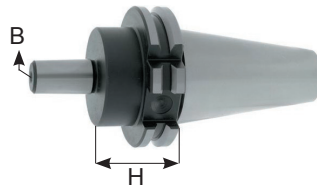
CODICE	FAM	CAP	EUR
CP13.MT3	1	1 ÷ 13	
CP16.MT3		2.5 ÷ 16	

Chiavi esagonali per mandrini portapunte autoserranti
Wrenches for drill chucks

CODICE	EX	MANDRINI	EUR
CH.EX4	4	CP8	
CH.EX5	5	HD8	
CH.EX6	6	HD13-HD16 CP13-CP16	



Attacco per Mandrini autoserranti
Drill chuck Arbors



TC30 / 40 / 50

CODICE	FAM	DIN	B	H	EUR
TC30.H25.B12	1	DIN/238	B12	25	
TC30.H25.B16			B16	25	
TC40.H40.B12			B12	40	
TC40.H40.B16			B16	40	
TC40.H40.B18			B18	40	
TC50.H40.B16			B16	40	
TC50.H40.B18			B18	40	

Mandrini autoserranti manuali con griffe in Acciaio
Drill Chuck heads with Stainless Jaws

DC

CODICE	CAP	B
DC13.B16	1 ÷ 13	16
DC16.B16	2.5 ÷ 16	16
DC16.B18		18



Mandrini autoserranti manuali con griffe in Titanio
Drill Chuck heads with Titanium Coated Jaws

DCK

CODICE	CAP	B
DC8S.B12	0.5 ÷ 8	12
DC10S.B12	0.5 ÷ 10	
DC13S.B12	1 ÷ 13	
DC13S.B16	1 ÷ 13	16
DC16S.B16	2.5 ÷ 16	
DC16S.B18		18

