



**MANDRINI  
ATTACCO TRAPEZOIDALE  
DIN/6327**

DIN/6327 TRAPEZOIDALE  
TOOLHOLDERS

**4F**



# MANDRINI ATTACCO TRAPEZOIDALE DIN/6327

DIN/6327 TRAPEZOIDALE  
TOOLHOLDERS



**MANDRINI CAMBIO RAPIDO A MANO**  
QUICK CHANGE DRILLING CHUCKS ONE HAND



**GHIERA DI REGISTRAZIONE**  
ADJUSTING NUT TYPE GH

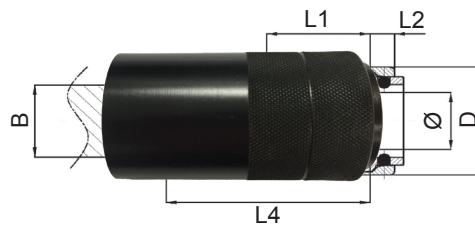


**GHIERE A CAMBIO RAPIDO**  
ADJUSTING NUT TYPE CRM FOR DRILLING CHUCKS  
WITH QUICK CHANGE SYSTEM

**4F**

**Mandrini a cambio rapido a una mano (DIN/55058)**

Quick change drilling chucks one hand (DIN/55058)

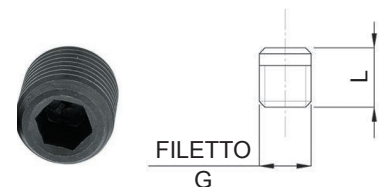

**RC**

CODICE	Ø	B	D	L1	L2	L4	M	EUR
RC-TL12	12	20	24	22	9	42	M5	
RC-TL16	16	25	30	34	9.5	65	M6	
RC-TL20	20	32	38	34	11	72	M6	
RC-TL25	25	37	45	38	12	79	M8	
RC-TL28	28	40	48	38	12	81	M8	
RC-TL32	32	45	55	45	14	83	M8	
RC-TL36	36	50	60	45	16	99	M8	
RC-TL48	48	67	80	57	20	100	M10	

**Grani per mandrini a cambio rapido**

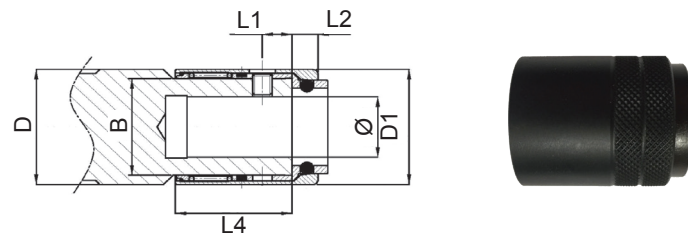
Screw Quick change drilling chucks

CODICE	Ø	G	L	EUR
RC-TL5S	12	M5	4	
RC-TL6S	16 - 20	M6	5.5	
RC-TL8S	25 - 28	M8	6.9	
RC-TL8LS	32 - 36	M8	7.5	
RC-TL10S	48	M10	9.5	



**Mandrini a cambio rapido a una mano DIN/55058**

Quick change drilling chucks two hands din/55058



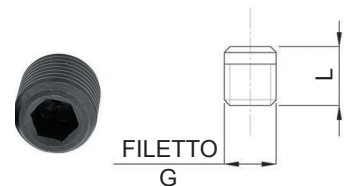
**RRC**

CODICE	Ø	B	D	D1	L1	L2	L4	M	EUR
RRC-TL16	16	22	25	27	8	9.5	30	M6	
RRC-TL20	20	28	32	34	8	11	30	M6	
RRC-TL25	25	34.5	37	41	8	12	32	M8	
RRC-TL28	28	37	40	44	8	12	32	M8	
RRC-TL32	32	41	45	49	9	13.5	39	M8	
RRC-TL36	36	46	50	55	9	16	39	M8	
RRC-TL48	48	61	67	73	11	20	51	M10	

**Grani per mandrini a cambio rapido corto**

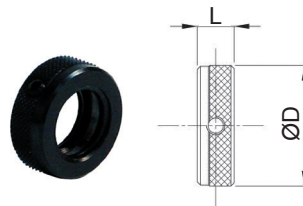
Screw Quick change drilling chucks short

CODICE	Ø	G	L	EUR
RRC-TL5S	16 - 20	M5	4	
RRC-TL6S	25 - 28 - 32 - 36	M6	5.5	
RRC-TL8S	48	M8	7.5	



**Ghiere di registrazione**

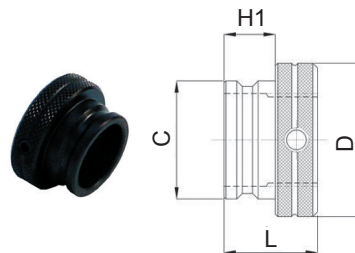
Adjusting nut type GH


**GH**

CODICE	PASSO	D	L	EUR
GH-10	TR 10x1.5	16	12	
GH-12	TR 12x1.5	20	12	
GH-16	TR 16x1.5	24.6	12	
GH-20	TR 20x2	31.6	12	
GH-28	TR 28x2	39.6	12	
GH-36	TR 36x2	49.6	14	
GH-48	TR 48x2	66.6	18	

**Ghiere a cambio rapido**

Adjusting nut type CRM for drilling cucks with quick change system


**CRM**

CODICE	CAP	D	C	H1	L	EUR
CRM-12	TR 12x1.5	21.5	16.4	9	18	
CRM-16	TR 16x1.5	26	19.9	9.5	18.5	
CRM-20	TR 20x2	33	25.4	11	20	
CRM-25	TR 25x2	40	31.9	12	22	
CRM-28	TR 28x2	42	33.9	12	22	
CRM-32	TR 32x2	47	37.9	13.5	23.5	
CRM-36	TR 36x2	54	43.4	16	26	
CRM-48	TR 48x2	72	57.9	20	34	