



BUSSOLE PORTAMASCHI - PINZE - TIRANTI E RICAMBI

ADAPTERS - COLLETS -
PULL STUDS AND
ACCESSORIES

11



BUSSOLE PORTAMASCHI - PINZE - TIRANTI E RICAMBI

ADAPTERS - COLLETS - PULL STUDS AND ACCESSORIES



GHIERE MINI
MINI ER NUTS



GHIERE STANDARD
STANDARD NUTS



GHIERE STANDARD A SFERE
FRICTION BEARING NUTS



GHIERE MINI PINZE ER - ALTA VELOCITÀ
NOTCH - FREE MINI NUTS FOR HIGH SPEED



GHIERE MINI CON DISCO DI TENUTA DEL REFRIGERANTE
NUTS WITH SEAL DISCS MINI TYPE



GHIERE CON CANALI DI LUBRIFICAZIONE
NUTS WITH WITH COOLANT CHANNELS



GHIERE CON FILETTO ESTERNO
EXTERNALLY THREADED NUTS



CHIAVI PER GHIERE
WRENCHES FOR NUTS

11

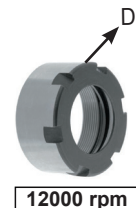
Ghiere MINI
 Mini ER nuts

Ghiere MINI

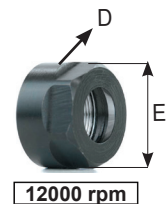
CODICE	D	M x P	*Nm	EUR
G8M	12	M10 x 0.75	5 ÷ 6	
G11M	16	M13 x 0.75	7 ÷ 17	
G16M	22	M19 x 1	12 ÷ 24	
G20M	28	M24 x 1	16 ÷ 28	
G25M	35	M30 x 1	22 ÷ 32	


Ghiere MINI - Filetto sinistro

CODICE	D	M x P	*Nm	EUR
G11ML	16	M13 x 0.75	7 ÷ 17	
G16ML	22	M19 x 1.5	12 ÷ 24	
G25ML	35	M30 x 1.5	22 ÷ 32	


Ghiere MINI - Esagonali

CODICE	D	E	M x P	*Nm	EUR
G11MSE	16	14	M13 x 0.75	7 ÷ 17	
G16MSE	25	22	M19 x 1	12 ÷ 24	
G20MSE	30	27	M24 x 1	16 ÷ 28	
G25MSE	37	34	M30 x 1	22 ÷ 32	


Chiavi per ghiere MINI
 Wrenches for mini nuts

CODICE	EUR
CH8M	
CH11M	
CH16M	
CH20M	
CH25M	


Chiavi per Ghiere esagonali
 Wrenches for Hexagonal nuts

CODICE	EUR
CH.E14	
CH.E17	
CH.E19	
CH.E22	
CH.E25	
CH.E27	
CH.E28	
CH.E30	
CH.E32	
CH.E34	
CH.E38	



* Nm = Forza di serraggio consigliata
 Recommended tightening torque

Ghiere STANDARD

Standard nuts

Ghiere STANDARD

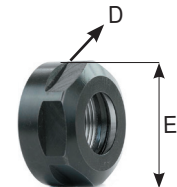
CODICE	D	M x P	*Nm	EUR
G16S	32	M22 x 1.5	15 ÷ 50	
G20S	35	M25 x 1.5	16 ÷ 75	
G25S	42	M32 x 1.5	25 ÷ 100	
G32S	50	M40 x 1.5	25 ÷ 140	
G40S	63	M50 x 1.5	60 ÷ 170	
G50S	78	M64 x 2	120 ÷ 250	
G32SL Filetto sinistro	50	M40 x 1.5	25 ÷ 120	
G40SL Filetto sinistro	63	M50 x 1.5	60 ÷ 170	



12000 rpm

Ghiere STANDARD - Esagonali

CODICE	D	E	M x P	*Nm	EUR
G11SE	19	17	M14 x 0.75	8 ÷ 24	
G16SE	28	25	M22 x 1.5	15 ÷ 50	
G20SE	34	30	M25 x 1.5	16 ÷ 75	
G25SE	42	38	M32 x 1.5	25 ÷ 100	
G16SEL Filetto sinistro	28	25	M22 x 1.5	15 ÷ 50	
G20SEL Filetto sinistro	34	30	M25 x 1.5	16 ÷ 75	



12000 rpm

Chiavi per ghiere STANDARD

Wrenches for nuts STANDARD

CODICE	EUR
CH16S	
CH20S	
CH25S	
CH32S	
CH40S	
CH50S	


Chiavi per Ghiere esagonali

Wrenches for Hexagonal nuts

CODICE	EUR
CH.E14	
CH.E17	
CH.E19	
CH.E22	
CH.E25	
CH.E27	
CH.E28	
CH.E30	
CH.E32	
CH.E34	
CH.E38	

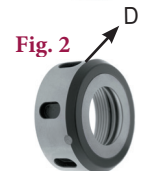
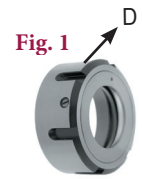


* Nm = Forza di serraggio consigliata
 Recommended tightening torque

Ghiere ER a sfere
Friction bearing ER nuts

Ghiere - A sfere

CODICE		D	M x P	*Nm	EUR
G16C	Fig. 1	32	M22 x 1.5	16 ÷ 55	
G20C	Fig. 1	35	M25 x 1.5	16 ÷ 80	
G25C	Fig. 1	42	M32 x 1.5	20 ÷ 110	
G32C	Fig. 1	50	M40 x 1.5	20 ÷ 140	
G40C	Fig. 1	63	M50 x 1.5	40 ÷ 180	
G50C	Fig. 1	78	M64 x 2	50 ÷ 200	
G60C	Fig. 2	83	M70 x 1.5	60 ÷ 240	



**Chiavi per ghiere
STANDARD**

Wrenches for STANDARD nuts

CODICE	EUR
CH16S	
CH20S	
CH25S	
CH32S	
CH40S	



**Chiavi a settore
per ghiere SKS**

Hook Wrenches for SKS nuts

CODICE	EUR
CH10SKS	
CH16SKS	
CH20SKS	
CH25SKS	



* Nm = Forza di serraggio consigliata
Recommended tightening torque

Ghiere ER concentriche

Concentric ER nuts

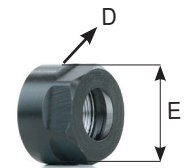
Ghiere ER mini concentriche

CODICE	D	M x P	*Nm	EUR
G16WDM	22	M19 x 1	12 ÷ 24	
G20WDM	28	M24 x 1	16 ÷ 28	
G25WDM	35	M30 x 1	22 ÷ 32	



Ghiere ER Esagonali concentriche

CODICE	D	E	M x P	*Nm	EUR
G16WDE	28	25	M22 x 1.5	15 ÷ 50	
G20WDE	34	30	M25 x 1.5	16 ÷ 75	



Ghiere ER STANDARD concentriche

CODICE	D	M x P	*Nm	EUR
G20WD	35	M25 x 1.5	16 ÷ 70	
G25WD	42	M32 x 1.5	25 ÷ 100	
G32WD	50	M40 x 1.5	25 ÷ 140	
G40WD	63	M50 x 1.5	60 ÷ 170	



Chiavi per ghiere MINI

Wrenches for MINI nuts

CODICE	EUR
CH16M	
CH20M	
CH25M	



Chiavi per Ghiere esagonali

Wrenches for Hexagonal nuts

CODICE	EUR
CH.E14	
CH.E17	
CH.E19	
CH.E22	
CH.E25	
CH.E27	
CH.E28	
CH.E30	
CH.E32	
CH.E34	
CH.E38	



Chiavi per ghiere STANDARD

Wrenches for STANDARD nuts

CODICE	EUR
CH20S	
CH25S	
CH32S	
CH40S	



* Nm = Forza di serraggio consigliata
 Recommended tightening torque

Ghiere ER senza tacche

Notch-free ER

Ghiere ER mini senza tacche

CODICE	D	M x P	*Nm	EUR
G8NFM	12	M10 x 0.75	5 ÷ 6	
G11NFM	16	M13 x 0.75	7 ÷ 17	
G16NFM	24	M19 x 1	12 ÷ 24	
G20NFM	30	M24 x 1	16 ÷ 28	
G25NFM	37	M30 x 1	22 ÷ 32	



20000 rpm

Ghiere ER STANDARD senza tacche

CODICE	D	M x P	*Nm	EUR
G16NF	32	M22 x 1.5	15 ÷ 50	
G20NF	35	M25 x 1.5	16 ÷ 75	
G25NF	42	M32 x 1.5	25 ÷ 100	
G32NF	50	M40 x 1.5	25 ÷ 140	
G40NF	63	M50 x 1.5	60 ÷ 170	



20000 rpm

**Chiavi dinamometriche a rulli
 per ghiere MINI senza tacche**

 Torque wrenches with rollers for
 notch-free MINI nuts

CODICE	EUR
CD8NFM	
CD11NFM	
CD16NFM	
CD20NFM	
CD25NFM	


**Chiavi dinamometriche a rulli
 per ghiere senza tacche**

 Torque wrenches with rollers for
 notch-free clamping nuts

CODICE	EUR
CD16NF	
CD20NF	
CD25NF	
CD32NF	
CD40NF	



* Nm = Forza di serraggio consigliata
 Recommended tightening torque

Ghiere MINI con disco di tenuta del refrigerante

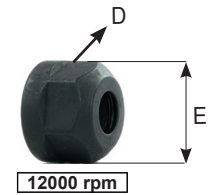
Nuts with seal disks Mini type

CODICE	D	M x P	*Nm	EUR
G16HTM	22	M19 x 1	12 ÷ 24	
G20HTM	28	M24 x 1	16 ÷ 28	
G25HTM	35	M30 x 1	22 ÷ 32	


Ghiere ESAGONALI con disco di tenuta del refrigerante

Nuts with seal disks esagonali type

CODICE	D	E	M x P	*Nm	EUR
G16HTE	28	25	M22 x 1.5	15 ÷ 50	
G20HTE	34	30	M25 x 1.5	16 ÷ 75	


Ghiere STANDARD con disco di tenuta del refrigerante

Nuts with seal disks STANDARD type

CODICE	D	M x P	*Nm	EUR
G25HT	42	M32 x 1.5	25 ÷ 100	
G32HT	50	M40 x 1.5	25 ÷ 140	
G40HT	63	M50 x 1.5	60 ÷ 170	


Dischi di tenuta del refrigerante

Sealed disc with viton-o-ring

CODICE GHIERA	CODICE DISCO	RAGGIO	EUR
RG16	RG16 Ø4 - Ø10	x 1mm	
RG20	RG20 Ø4 - Ø13	x 1mm	
RG25	RG25 Ø4 - Ø16	x 1mm	
RG32	RG32 Ø4.5 - Ø20	x 1mm	
RG40	RG40 Ø4 - Ø26	x 1mm	

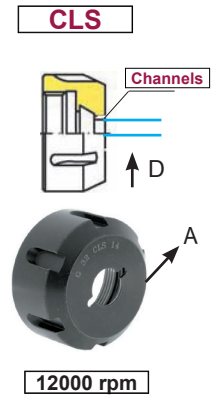


* Nm = Forza di serraggio consigliata
 Recommended tightening torque

Ghiere con canali di lubrificazione

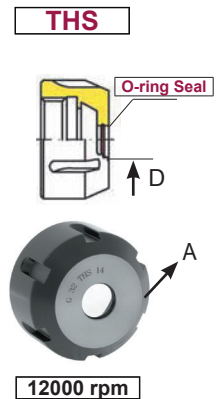
Nuts with coolant channels

CODICE	A	F	*Nm	EUR
G32CLS.D.4	50	M40 x 1.5	25 ÷ 140	
G32CLS.D.5	50	M40 x 1.5	25 ÷ 140	
G32CLS.D.6	50	M40 x 1.5	25 ÷ 140	
G32CLS.D.7	50	M40 x 1.5	25 ÷ 140	
G32CLS.D.8	50	M40 x 1.5	25 ÷ 140	
G32CLS.D.9	50	M40 x 1.5	25 ÷ 140	
G32CLS.D.10	50	M40 x 1.5	25 ÷ 140	
G32CLS.D.11	50	M40 x 1.5	25 ÷ 140	
G32CLS.D.12	50	M40 x 1.5	25 ÷ 140	
G32CLS.D.13	50	M40 x 1.5	25 ÷ 140	
G32CLS.D.14	50	M40 x 1.5	25 ÷ 140	
G32CLS.D.15	50	M40 x 1.5	25 ÷ 140	
G32CLS.D.16	50	M40 x 1.5	25 ÷ 140	
G32CLS.D.17	50	M40 x 1.5	25 ÷ 140	
G32CLS.D.18	50	M40 x 1.5	25 ÷ 140	
G32CLS.D.19	50	M40 x 1.5	25 ÷ 140	
G32CLS.D.20	50	M40 x 1.5	25 ÷ 140	


Ghiere a tenuta del refrigerante

Sealed nuts

CODICE	A	F	*Nm	EUR
G32THS.D.4	50	M40 x 1.5	25 ÷ 140	
G32THS.D.5	50	M40 x 1.5	25 ÷ 140	
G32THS.D.6	50	M40 x 1.5	25 ÷ 140	
G32THS.D.7	50	M40 x 1.5	25 ÷ 140	
G32THS.D.8	50	M40 x 1.5	25 ÷ 140	
G32THS.D.9	50	M40 x 1.5	25 ÷ 140	
G32THS.D.10	50	M40 x 1.5	25 ÷ 140	
G32THS.D.11	50	M40 x 1.5	25 ÷ 140	
G32THS.D.12	50	M40 x 1.5	25 ÷ 140	
G32THS.D.13	50	M40 x 1.5	25 ÷ 140	
G32THS.D.14	50	M40 x 1.5	25 ÷ 140	
G32THS.D.15	50	M40 x 1.5	25 ÷ 140	
G32THS.D.16	50	M40 x 1.5	25 ÷ 140	
G32THS.D.17	50	M40 x 1.5	25 ÷ 140	
G32THS.D.18	50	M40 x 1.5	25 ÷ 140	
G32THS.D.19	50	M40 x 1.5	25 ÷ 140	
G32THS.D.20	50	M40 x 1.5	25 ÷ 140	

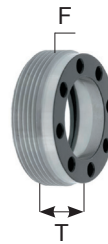


* Nm = Forza di serraggio consigliata
 Recommended tightening torque

Ghiere con filetto esterno

Externally threaded nuts

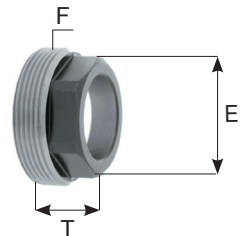
CODICE	M x P	T	EUR
G11A	M18 x 1	6	
G16A	M24 x 1	8	
G20A	M28 x 1.5	11	
G25A	M32 x 1.5	12	
G32A	M40 x 1.5	14	



Ghiere ESAGONALI con filetto esterno

Externally threaded EXAGONAL nuts

CODICE	M x P	E	T	EUR
G16A.EX19	M24 x 1	19	12	
G20A.EX22	M28 x 1.5	22	13	
G25A.EX27	M32 x 1.5	27	16.5	
G32A.EX32	M40 x 1.5	32	19	



Chiavi per ghiere con fori

Wrenches for nuts with holes

CODICE	EUR
CH11A	
CH16A	
CH20A	
CH25A	
CH32A	



Chiavi per ghiere con esagono

Wrenches for nuts with hexagon

CODICE	EUR
CH.E14	
CH.E17	
CH.E19	
CH.E22	
CH.E25	
CH.E27	
CH.E28	
CH.E30	
CH.E32	
CH.E34	
CH.E38	



Chiavi per ghiera MINI

Wrenches for MINI nuts

CODICE	EUR
CH8M	
CH11M	
CH16M	
CH20M	
CH25M	



Chiavi per ghiera con esagono

Wrenches for nuts with hexagon

CODICE	EUR
CH.E14	
CH.E17	
CH.E19	
CH.E22	
CH.E25	
CH.E27	
CH.E28	
CH.E30	
CH.E32	
CH.E34	
CH.E38	



Chiavi dinamometriche per ghiera STANDARD

Torque wrenches for clamping STANDARD nuts

CODICE	EUR
CD16S	
CD20S	
CD25S	
CD32S	
CD40S	



Chiavi dinamometriche per ghiera MINI

Torque wrenches for MINI nuts

CODICE	EUR
CD8M	
CD11M	
CD16M	
CD20M	
CD25M	



Chiavi dinamometriche per ghiera ESAGONALI

Wrenches for with HEXAGONAL nuts

CODICE	EUR
CD.E14	
CD.E17	
CD.E22	
CD.E25	
CD.E30	



Chiavi a settore per mandrini Portapunta

Hook Wrenches for drill chucks

CODICE	EUR
CH.DC8	
CH.DC10	
CH.DC13	
CH.DC16	



Chiavi dinamometriche a rulli per ghiera MINI

Torque wrenches with rollers for MINI nuts

CODICE	EUR
CD8NFM	
CD11NFM	
CD16NFM	
CD20NFM	
CD25NFM	



Chiavi per ghiera STANDARD

Wrenches for STANDARD nuts

CODICE	EUR
CH16S	
CH20S	
CH25S	
CH32S	
CH40S	
CH50S	



Chiavi dinamometriche a rulli per ghiera STANDARD

Torque wrenches with rollers for clamping STANDARD nuts

CODICE	EUR
CD16NF	
CD20NF	
CD25NF	
CD32NF	
CD40NF	



**Chiavi esagonali per mandrini
 portapunta autoserranti**

Wrenches for drill chucks

CODICE	EX	MANDRINI	EUR
CH.EX4	4	CP8	
CH.EX5	5	HD8	
CH.EX6	6	HD13-HD16 CP13-CP16	


Cricchetto e bussole di serraggio dei tiranti

Quick ratchet and sockets for pull stud clamping



CODICE	FAM	EUR
CH.SKT	1	

Bussole per tiranti intercambiabili

Interchangeable socket

CODICE	FAM	SW	ISO	TIRANTE	EUR
SKT.DIN40	1	19	40	(DIN40)	
SKT.DIN50		30	50	(DIN50)	
SKT.CAT40		18	40	(CAT40)	
SKT.CAT50		30	50	(CAT50)	
SKT.BT40		19	40	(MAS403/BT)	
SKT.BT50		30	50	(MAS403/BT)	
SKT.JS40		19	40	(JIS/6339-B)	
SKT.JS50		30	50	(JIS/6339-B)	

Forza di serraggio consigliata

Recommended tightening torque



FORZA
G.M12 = 20÷25 Nm
G.M16 = 60÷80 Nm
G.M24 = 200÷250 Nm

Chiavi a settore per ghiera chiudipinza

Hook wrenches for clamping nuts

CODICE	MANDRINI	EUR
CHO16	45 - 50	
CHO20	45 - 50	
CHO25	58 - 62 - 65	
CHO32	68 - 70 - 75	
CHO40	80 - 85 - 90	



Chiavi a rulli per ghiera MINI senza tacche

Wrenches with rollers for notch-free MINI nuts

CODICE	EUR
CR8M	
CR11M	
CR16M	
CR20M	
CR25M	



**Chiavi a rulli per ghiera
STANDARD senza tacche**

Wrenches with rollers for notch-free clamping nuts

CODICE	EUR
CR16	
CR20	
CR25	
CR32	
CR40	



Chiavi per ghiera con fori

Wrenches for nuts with holes

CODICE	EUR
CH11A	
CH16A	
CH20A	
CH25A	
CH32A	



**Chiavi a settore
per ghiera SKS**

Hook Wrenches for SKS nuts

CODICE	EUR
CH10SKS	
CH16SKS	
CH20SKS	
CH25SKS	

