



# **BUSSOLE PORTAMASCHI - PINZE - TIRANTI E RICAMBI**

ADAPTERS - COLLETS -  
PULL STUDS AND  
ACCESSORIES

# 1H



# BUSSOLE PORTAMASCHI - PINZE - TIRANTI E RICAMBI

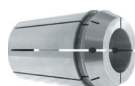
ADAPTERS - COLLETS - PULL STUDS AND ACCESSORIES



**PINZE DI SERRAGGIO ER**  
ER CLAMPING COLLETS



**PINZE DI ALTA PRECISIONE UP**  
HIGH PRECISION COLLETS UP



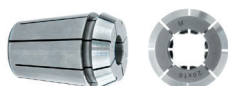
**PINZE TENUTA REFRIGERANTE CON INSERTI IN NEOPRENE ERXG**  
RUBBER SEALED COLLETS



**PINZE A TENUTA MECCANICA**  
SOLID SEALED COLLETS



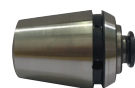
**PINZE CON FORI DI LUBRIFICAZIONE JET**  
COLLETS WITH COOLANT HOLES JET



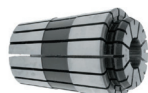
**PINZE PORTAMASCHI CON QUADRO ERX**  
TAPPING COLLETS WITH INTERNAL SQUARE ERX



**PINZE CON OSCILLAZIONE RADIALE PER ALESATORI ER-PA**  
FLOATING COLLETS FOR REAMERS ER-PA



**PINZE A CAMBIO RAPIDO TRAZIONE ERT - ERF**  
QUICK CHANGE AND TRACTION COLLETS ERT - ERF



**PINZE DI PRECISIONE ERCD**  
PRECISION COLLETS ERCD



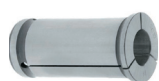
**PINZE DI PRECISIONE STANDARD EOC**  
STANDARD PRECISION COLLETS EOC



**PINZE TIPO "TG"**  
COLLETS "TG" TYPE



**PINZE TIPO "DA"**  
COLLETS "DA" TYPE



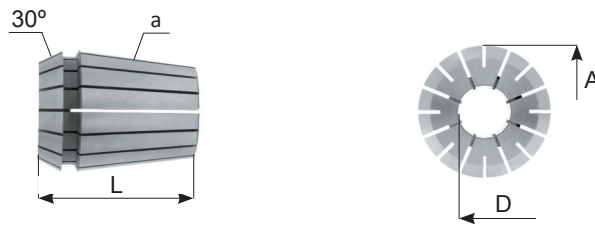
**PINZE CILINDRICHE PER MANDRINI A FORTE SERRAGGIO**  
COLLETS FOR POWER MILLING CHUCKS



**PINZE DI SERRAGGIO BARRA**  
COLLETS FOR SINGLE - SPINDLE LATHES

1H

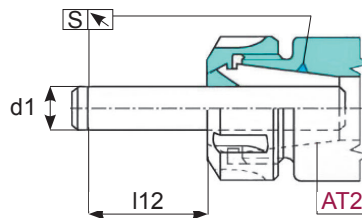
**Pinze**  
Collets



<b>CODICE</b>	<b>D mm min-max</b>	<b>CAPACITÀ DI SERRAGGIO mm</b>	<b>A</b>	<b>a AT3</b>	<b>L</b>
ER08 - 4004E	1 ÷ 5	0.5	8.5	8°	13.5
ER11 - 4008E	1 ÷ 7	0.5	11.5	8°	18
ER16 - 426E	1 ÷ 10	0.5 ÷ 1	17	8°	27.5
ER20 - 428E	1 ÷ 14	0.5 ÷ 1	21	8°	31.5
ER25 - 430E	1 ÷ 20	0.5 ÷ 1	26	8°	34
ER32 - 470E	2 ÷ 22	0.5 ÷ 1	33	8°	40
ER40 - 472E	3 ÷ 30	1	41	8°	46
ER50 - 477E	6 ÷ 34	2	52	8°	60
ER60 - 494E	10 ÷ 40	2	61	10°	60

**Tolleranza della rotazione delle pinze ER**

ER collet concentricity specification



<b>d1 - h5</b>		<b>112</b>	<b>STANDARD</b>	
<b>Minimo</b>	<b>Massimo</b>		<b>mm Min.</b>	<b>mm Max.</b>
<b>mm</b>	<b>mm</b>	<b>mm</b>		
1	1.6	6	0.010	0.015
1.6	3	10	0.010	0.015
3	7	16	0.010	0.015
7	10	25	0.010	0.015
10	18	40	0.010	0.015
18	26	50	0.015	0.020
26	40	60	0.015	0.020

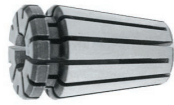
**Il valore della concentricità si controlla sul Ø nominale delle pinze**

This runout accuracy is valid only for the nominal size of the collets

– I valori di precisione indicati sono la media di 3 misurazioni a 120° eseguite con una spina di collaudo h6 del diametro nominale della pinza.

– Average of concentricity is tested each 120° at distance L and is valid only for nominal size of collet checked with a h6 pin.

**Pinze di precisione STANDARD**  
STANDARD precision collets



**ER8**

↗ 0,010 ÷ 0,015

CODICE	CAPACITÀ			EUR
ER8.D.1	1	÷	0.5	
ER8.D.1.5	1.5	÷	1	
ER8.D.2	2	÷	1.5	
ER8.D.2.5	2.5	÷	2	
ER8.D.3	3	÷	2.5	
ER8.D.3.5	3.5	÷	3	
ER8.D.4	4	÷	3.5	
ER8.D.4.5	4.5	÷	4	
ER8.D.5	5	÷	4.5	

**ER11**

↗ 0,010 ÷ 0,015

CODICE	CAPACITÀ			EUR
ER11.D.1	1	÷	0.5	
ER11.D.1.5	1.5	÷	1	
ER11.D.2	2	÷	1.5	
ER11.D.2.5	2.5	÷	2	
ER11.D.3	3	÷	2.5	
ER11.D.3.5	3.5	÷	3	
ER11.D.4	4	÷	3.5	
ER11.D.4.5	4.5	÷	4	
ER11.D.5	5	÷	4.5	
ER11.D.5.5	5.5	÷	5	
ER11.D.6	6	÷	5.5	
ER11.D.6.5	6.5	÷	6	
ER11.D.7	7	÷	6.5	

**Kit di pinze / Kit in Tray**

CODICE	EUR
TY.ER8-9	
D. 1 - 1.5 - 2 - 2.5 - 3 - 3.5 - 4 - 4.5 - 5	



**Kit di pinze / Kit in Tray**

CODICE	EUR
TY.ER11-13	
D. 1 - 1.5 - 2 - 2.5 - 3 - 3.5 - 4 - 4.5	
D. 5 - 5.5 - 6 - 6.5 - 7	



**Cassetta per pinze / Kit in Box**

CODICE	EUR
BX.ER8-9	
D. 1 - 1.5 - 2 - 2.5 - 3 - 3.5 - 4 - 4.5 - 5	



**Cassetta per pinze / Kit in Box**

CODICE	EUR
BX.ER11-13	
D. 1 - 1.5 - 2 - 2.5 - 3 - 3.5 - 4 - 4.5	
D. 5 - 5.5 - 6 - 6.5 - 7	



**Pinze di precisione STANDARD**  
STANDARD precision collets



**ER16**

↗ 0,010 ÷ 0,015

CODICE	CAPACITÀ			EUR
ER16.D.1	1	÷	0.5	
ER16.D.2	2	÷	1	
ER16.D.3	3	÷	2	
ER16.D.4	4	÷	3	
ER16.D.5	5	÷	4	
ER16.D.6	6	÷	5	
ER16.D.7	7	÷	6	
ER16.D.8	8	÷	7	
ER16.D.9	9	÷	8	
ER16.D.10	10	÷	9	
ER16.D.11	11	÷	10	
ER16.D.12	12	÷	11	

**ER20**

↗ 0,010 ÷ 0,015

CODICE	CAPACITÀ			EUR
ER20.D.1	1	÷	0.5	
ER20.D.2	2	÷	1	
ER20.D.3	3	÷	2	
ER20.D.4	4	÷	3	
ER20.D.5	5	÷	4	
ER20.D.6	6	÷	5	
ER20.D.7	7	÷	6	
ER20.D.8	8	÷	7	
ER20.D.9	9	÷	8	
ER20.D.10	10	÷	9	
ER20.D.11	11	÷	10	
ER20.D.12	12	÷	11	
ER20.D.13	13	÷	12	
ER20.D.14	14	÷	13	

**Kit di pinze / Kit in Tray**

CODICE	EUR
TY.ER16-10	
D. 1 - 2 - 3 - 4 - 5 - 6 - 7 - 8 - 9 - 10	



**Kit di pinze / Kit in Tray**

CODICE	EUR
TY.ER20-12	
D. 2 - 3 - 4 - 5 - 6 - 7 - 8 - 9 - 10 - 11 - 12 - 13	



**Cassetta per pinze / Kit in Box**

CODICE	EUR
BX.ER16-10	
D. 1 - 2 - 3 - 4 - 5 - 6 - 7 - 8 - 9 - 10	



**Cassetta per pinze / Kit in Box**

CODICE	EUR
BX.ER20-12	
D. 2 - 3 - 4 - 5 - 6 - 7 - 8 - 9 - 10 - 11 - 12 - 13	



**Pinze di precisione STANDARD**

Standard precision collets



**ER25**

$\nabla 0,010 \div 0,015$

CODICE	CAPACITÀ			EUR
ER25.D.1	1	÷	1	
ER25.D.2	2	÷	2	
ER25.D.3	3	÷	3	
ER25.D.4	4	÷	4	
ER25.D.5	5	÷	5	
ER25.D.6	6	÷	6	
ER25.D.7	7	÷	7	
ER25.D.8	8	÷	8	
ER25.D.9	9	÷	9	
ER25.D.10	10	÷	10	
ER25.D.11	11	÷	11	
ER25.D.12	12	÷	12	
ER25.D.13	13	÷	13	
ER25.D.14	14	÷	14	
ER25.D.15	15	÷	15	
ER25.D.16	16	÷	16	
ER25.D.17	17	÷	17	
ER25.D.18	18	÷	18	
ER25.D.19	19	÷	19	
ER25.D.20	20	÷	20	

**ER32**

$\nabla 0,010 \div 0,015$

CODICE	CAPACITÀ			EUR
ER32.D.2	2	÷	1.5	
ER32.D.3	3	÷	2	
ER32.D.4	4	÷	3	
ER32.D.5	5	÷	4	
ER32.D.6	6	÷	5	
ER32.D.7	7	÷	6	
ER32.D.8	8	÷	7	
ER32.D.9	9	÷	8	
ER32.D.10	10	÷	9	
ER32.D.11	11	÷	10	
ER32.D.12	12	÷	11	
ER32.D.13	13	÷	12	
ER32.D.14	14	÷	13	
ER32.D.15	15	÷	14	
ER32.D.16	16	÷	15	
ER32.D.17	17	÷	16	
ER32.D.18	18	÷	17	
ER32.D.19	19	÷	18	
ER32.D.20	20	÷	19	
ER32.D.21	21	÷	20	
ER32.D.22	22	÷	21	

**Kit di pinze / Kit in Tray**

CODICE	EUR
TY.ER25-6	
D. 4 - 6 - 8 - 10 - 12 - 16	

**Kit di pinze / Kit in Tray**

CODICE	EUR
TY.ER32-6	
D. 6 - 8 - 10 - 12 - 16 - 20	

**Cassetta per pinze / Kit in Box**

CODICE	EUR
TY.ER25-15 <b>KIT Fig. 1</b>	
BX.ER25-15 <b>BOX Fig. 2</b>	
D. 2 - 3 - 4 - 5 - 6 - 7 - 8 - 9 - 10 - 11	
D. 12 - 13 - 14 - 15 - 16	

**Cassetta per pinze / Kit in Box**

CODICE	EUR
TY.ER32-18 <b>Fig. 1</b>	
BX.ER32-18 <b>Fig. 2</b>	
D. 3 - 4 - 5 - 6 - 7 - 8 - 9 - 10 - 11 - 12	
D. 13 - 14 - 15 - 16 - 17 - 18 - 19 - 20	

Fig. 1



Fig. 2



Fig. 1



Fig. 2



**Pinze di precisione STANDARD**

Standard precision collets



**ER40**

$\nabla 0,010 \div 0,015$

CODICE	CAPACITÀ			EUR
ER40.D.3	3	÷	2	
ER40.D.4	4	÷	3	
ER40.D.5	5	÷	4	
ER40.D.6	6	÷	5	
ER40.D.7	7	÷	6	
ER40.D.8	8	÷	7	
ER40.D.9	9	÷	8	
ER40.D.10	10	÷	9	
ER40.D.11	11	÷	10	
ER40.D.12	12	÷	11	
ER40.D.13	13	÷	12	
ER40.D.14	14	÷	13	
ER40.D.15	15	÷	14	
ER40.D.16	16	÷	15	
ER40.D.17	17	÷	16	
ER40.D.18	18	÷	17	
ER40.D.19	19	÷	18	
ER40.D.20	20	÷	19	
ER40.D.21	21	÷	20	
ER40.D.22	22	÷	21	
ER40.D.23	23	÷	22	
ER40.D.24	24	÷	23	
ER40.D.25	25	÷	24	
ER40.D.26	26	÷	25	
ER40.D.27	27	÷	26	
ER40.D.28	28	÷	27	
ER40.D.29	29	÷	28	
ER40.D.30	30	÷	29	

**ER50**

$\nabla 0,010 \div 0,015$

CODICE	CAPACITÀ			EUR
ER50.D.6	6	÷	5	
ER50.D.7	7	÷	6	
ER50.D.8	8	÷	7	
ER50.D.9	9	÷	8	
ER50.D.10	10	÷	9	
ER50.D.11	11	÷	10	
ER50.D.12	12	÷	10	
ER50.D.13	13	÷	11	
ER50.D.14	14	÷	12	
ER50.D.15	15	÷	13	
ER50.D.16	16	÷	14	
ER50.D.17	17	÷	15	
ER50.D.18	18	÷	16	
ER50.D.19	19	÷	17	
ER50.D.20	20	÷	18	
ER50.D.21	21	÷	19	
ER50.D.22	22	÷	20	
ER50.D.23	23	÷	21	
ER50.D.24	24	÷	22	
ER50.D.25	25	÷	23	
ER50.D.26	26	÷	24	
ER50.D.27	27	÷	25	
ER50.D.28	28	÷	26	
ER50.D.29	29	÷	27	
ER50.D.30	30	÷	28	
ER50.D.31	31	÷	29	
ER50.D.32	32	÷	30	
ER50.D.33	33	÷	31	
ER50.D.34	34	÷	32	

**Kit di pinze / Kit in Tray**

CODICE	EUR
TY.ER40-23 <b>KIT Fig. 1</b>	
BX.ER40-23 <b>BOX Fig. 2</b>	
D. 4 - 5 - 6 - 7 - 8 - 9 - 10 - 11 - 12 - 13 - 14	
D. 15 - 16 - 17 - 18 - 19 - 20 - 21 - 22 - 23	
D. 24 - 25 - 26	

**Kit di pinze / Kit in Tray**

CODICE	EUR
TY.ER50-12	
D. 12 - 14 - 16 - 18 - 20 - 22 - 24 - 26	
D. 28 - 30 - 32 - 34	

Fig. 1



Fig. 2



**Pinze di precisione STANDARD**

Standard precision collets


**ER60**

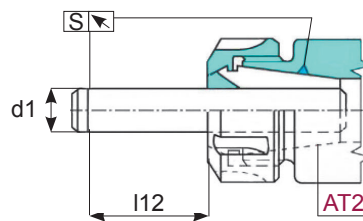
0,010 ÷ 0,015

CODICE	CAPACITÀ			EUR
ER60.D.10	10	÷	9	
ER60.D.11	11	÷	10	
ER60.D.12	12	÷	10	
ER60.D.13	13	÷	11	
ER60.D.14	14	÷	12	
ER60.D.15	15	÷	13	
ER60.D.16	16	÷	14	
ER60.D.17	17	÷	15	
ER60.D.18	18	÷	16	
ER60.D.19	19	÷	17	
ER60.D.20	20	÷	18	
ER60.D.21	21	÷	19	
ER60.D.22	22	÷	20	
ER60.D.23	23	÷	21	
ER60.D.24	24	÷	22	

CODICE	CAPACITÀ			EUR
ER60.D.25	25	÷	23	
ER60.D.26	26	÷	24	
ER60.D.27	27	÷	25	
ER60.D.28	28	÷	26	
ER60.D.29	29	÷	27	
ER60.D.30	30	÷	28	
ER60.D.31	31	÷	29	
ER60.D.32	32	÷	30	
ER60.D.33	33	÷	31	
ER60.D.34	34	÷	32	
ER60.D.35	35	÷	33	
ER60.D.36	36	÷	34	
ER60.D.37	37	÷	35	
ER60.D.38	38	÷	36	
ER60.D.39	39	÷	37	
ER60.D.40	40	÷	38	

**Tolleranza della rotazione delle Pinze ER HP**

ER HP collet concentricity specification



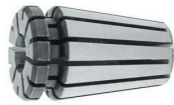
d1 - h5		l12	HP S max
Minimo	Massimo		
mm	mm	mm	mm
1	1.6	6	0.005
1.6	3	10	0.005
3	7	16	0.005
7	10	25	0.005
10	18	40	0.005
18	26	50	0.005
26	40	60	0.005

Il valore della concentricità si controlla sul Ø nominale delle pinze.

This runout accuracy is valid only for the nominal size of the collets.



**Pinze di alta precisione**  
High precision collets



**ER8-UP**

0,005HP

CODICE	CAPACITÀ			EUR
ER8UP.D.1	1	÷	0.5	
ER8UP.D.1.5	1.5	÷	1	
ER8UP.D.2	2	÷	1.5	
ER8UP.D.2.5	2.5	÷	2	
ER8UP.D.3	3	÷	2.5	
ER8UP.D.3.5	3.5	÷	3	
ER8UP.D.4	4	÷	3.5	
ER8UP.D.4.5	4.5	÷	4	
ER8UP.D.5	5	÷	4.5	

**ER11-UP**

0,005HP

CODICE	CAPACITÀ			EUR
ER11UP.D.1	1	÷	0.5	
ER11UP.D.1.5	1.5	÷	1	
ER11UP.D.2	2	÷	1.5	
ER11UP.D.2.5	2.5	÷	2	
ER11UP.D.3	3	÷	2.5	
ER11UP.D.3.5	3.5	÷	3	
ER11UP.D.4	4	÷	3.5	
ER11UP.D.4.5	4.5	÷	4	
ER11UP.D.5	5	÷	4.5	
ER11UP.D.5.5	5.5	÷	5	
ER11UP.D.6	6	÷	5.5	
ER11UP.D.6.5	6.5	÷	6	
ER11UP.D.7	7	÷	6.5	

**Cassetta per pinze / Kit in Box**

CODICE	EUR
BX.ER8UP-9	
D. 1 - 1.5 - 2 - 2.5 - 3 - 3.5 - 4 - 4.5 - 5	

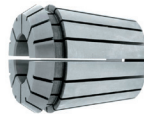


**Cassetta per pinze / Kit in Box**

CODICE	EUR
BX.ER11UP-13	
D. 1 - 1.5 - 2 - 2.5 - 3 - 3.5 - 4 - 4.5 - 5	
D. 5.5 - 6 - 6.5 - 7	



**Pinze di alta precisione**  
High precision collets



**ER16-UP**

0,005HP

CODICE	CAPACITÀ			EUR
ER16UP.D.1	1	÷	0.5	
ER16UP.D.1.5	1.5	÷	1	
ER16UP.D.2	2	÷	1.5	
ER16UP.D.2.5	2.5	÷	2	
ER16UP.D.3	3	÷	2.5	
ER16UP.D.3.5	3.5	÷	3	
ER16UP.D.4	4	÷	3.5	
ER16UP.D.4.5	4.5	÷	4	
ER16UP.D.5	5	÷	4.5	
ER16UP.D.5.5	5.5	÷	5	
ER16UP.D.6	6	÷	5.5	
ER16UP.D.6.5	6.5	÷	6	
ER16UP.D.7	7	÷	6.5	
ER16UP.D.7.5	7.5	÷	7	
ER16UP.D.8	8	÷	7.5	
ER16UP.D.8.5	8.5	÷	8	
ER16UP.D.9	9	÷	8.5	
ER16UP.D.9.5	9.5	÷	9	
ER16UP.D.10	10	÷	9.5	

**ER20-UP**

0,005HP

CODICE	CAPACITÀ			EUR
ER20UP.D.1	1	÷	0.5	
ER20UP.D.1.5	1.5	÷	1	
ER20UP.D.2	2	÷	1.5	
ER20UP.D.2.5	2.5	÷	2	
ER20UP.D.3	3	÷	2.5	
ER20UP.D.3.5	3.5	÷	3	
ER20UP.D.4	4	÷	3.5	
ER20UP.D.4.5	4.5	÷	4	
ER20UP.D.5	5	÷	4.5	
ER20UP.D.5.5	5.5	÷	5	
ER20UP.D.6	6	÷	5.5	
ER20UP.D.6.5	6.5	÷	6	
ER20UP.D.7	7	÷	6.5	
ER20UP.D.7.5	7.5	÷	7	
ER20UP.D.8	8	÷	7.5	
ER20UP.D.8.5	8.5	÷	8	
ER20UP.D.9	9	÷	8.5	
ER20UP.D.9.5	9.5	÷	9	
ER20UP.D.10	10	÷	9.5	
ER20UP.D.10.5	10.5	÷	10	
ER20UP.D.11	11	÷	10.5	
ER20UP.D.11.5	11.5	÷	11	
ER20UP.D.12	12	÷	11.5	
ER20UP.D.12.5	12.5	÷	12	
ER20UP.D.13	13	÷	12.5	

**Cassetta per pinze / Kit in Box**

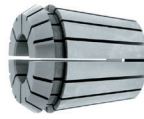
CODICE	EUR
BX.ER16UP-10	
D. 1 - 2 - 3 - 4 - 5 - 6 - 7 - 8 - 9 - 10	



**Cassetta per pinze / Kit in Box**

CODICE	EUR
BX.ER20UP-12	
D. 2 - 3 - 4 - 5 - 6 - 7 - 8 - 9 - 10 - 11 - 12 - 13	



**Pinze di alta precisione**  
 High precision collets

**ER25-UP**

0,005HP

CODICE	CAPACITÀ			EUR
ER25UP.D.1	1	÷	0.5	
ER25UP.D.1.5	1.5	÷	1	
ER25UP.D.2	2	÷	1.5	
ER25UP.D.2.5	2.5	÷	2	
ER25UP.D.3	3	÷	2.5	
ER25UP.D.3.5	3.5	÷	3	
ER25UP.D.4	4	÷	3.5	
ER25UP.D.4.5	4.5	÷	4	
ER25UP.D.5	5	÷	4.5	
ER25UP.D.5.5	5.5	÷	5	
ER25UP.D.6	6	÷	5.5	
ER25UP.D.6.5	6.5	÷	6	
ER25UP.D.7	7	÷	6.5	
ER25UP.D.7.5	7.5	÷	7	
ER25UP.D.8	8	÷	7.5	
ER25UP.D.8.5	8.5	÷	8	
ER25UP.D.9	9	÷	8.5	
ER25UP.D.9.5	9.5	÷	9	
ER25UP.D.10	10	÷	9.5	
ER25UP.D.10.5	10.5	÷	10	
ER25UP.D.11	11	÷	10.5	
ER25UP.D.11.5	11.5	÷	11	
ER25UP.D.12	12	÷	11.5	
ER25UP.D.12.5	12.5	÷	12	
ER25UP.D.13	13	÷	12.5	
ER25UP.D.13.5	13.5	÷	13	
ER25UP.D.14	14	÷	13.5	
ER25UP.D.14.5	14.5	÷	14	
ER25UP.D.15	15	÷	14.5	
ER25UP.D.15.5	15.5	÷	15	
ER25UP.D.16	16	÷	15.5	

**ER32-UP**

0,005HP

CODICE	CAPACITÀ			EUR
ER32UP.D.2	2	÷	1.5	
ER32UP.D.2.5	2.5	÷	2	
ER32UP.D.3	3	÷	2.5	
ER32UP.D.3.5	3.5	÷	3	
ER32UP.D.4	4	÷	3.5	
ER32UP.D.4.5	4.5	÷	4	
ER32UP.D.5	5	÷	4.5	
ER32UP.D.5.5	5.5	÷	5	
ER32UP.D.6	6	÷	5.5	
ER32UP.D.6.5	6.5	÷	6	
ER32UP.D.7	7	÷	6.5	
ER32UP.D.7.5	7.5	÷	7	
ER32UP.D.8	8	÷	7.5	
ER32UP.D.8.5	8.5	÷	8	
ER32UP.D.9	9	÷	8.5	
ER32UP.D.9.5	9.5	÷	9	
ER32UP.D.10	10	÷	9.5	
ER32UP.D.10.5	10.5	÷	10	
ER32UP.D.11	11	÷	10.5	
ER32UP.D.11.5	11.5	÷	11	
ER32UP.D.12	12	÷	11.5	
ER32UP.D.12.5	12.5	÷	12	
ER32UP.D.13	13	÷	12.5	
ER32UP.D.13.5	13.5	÷	13	
ER32UP.D.14	14	÷	13.5	
ER32UP.D.14.5	14.5	÷	14	
ER32UP.D.15	15	÷	14.5	
ER32UP.D.15.5	15.5	÷	15	
ER32UP.D.16	16	÷	15.5	
ER32UP.D.16.5	16.5	÷	16	
ER32UP.D.17	17	÷	16.5	
ER32UP.D.17.5	17.5	÷	17	
ER32UP.D.18	18	÷	17.5	
ER32UP.D.18.5	18.5	÷	18	
ER32UP.D.19	19	÷	18.5	
ER32UP.D.19.5	19.5	÷	19	
ER32UP.D.20	20	÷	19.5	

**Cassetta per pinze / Kit in Box**

CODICE	EUR
BX.ER25UP-15	
D. 2 - 3 - 4 - 5 - 6 - 7 - 8 - 9 - 10 - 11 - 12 - 13	
D. 14 - 15 - 16	

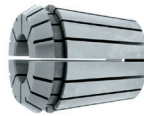
**Cassetta per pinze / Kit in Box**

CODICE	EUR
BX.ER32UP-18	
D. 3 - 4 - 5 - 6 - 7 - 8 - 9 - 10 - 11 - 12 - 13	
D. 14 - 15 - 16 - 17 - 18 - 19 - 20	



**Pinze di alta precisione**

High precision collets



**ER40-UP**

0,005HP

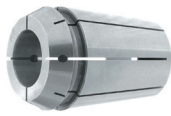
CODICE	CAPACITÀ			EUR
ER40UP.D.3	3	÷	2	
ER40UP.D.4	4	÷	3	
ER40UP.D.5	5	÷	4	
ER40UP.D.6	6	÷	5	
ER40UP.D.7	7	÷	6	
ER40UP.D.8	8	÷	7	
ER40UP.D.9	9	÷	8	
ER40UP.D.10	10	÷	9	
ER40UP.D.11	11	÷	10	
ER40UP.D.12	12	÷	11	
ER40UP.D.13	13	÷	12	
ER40UP.D.14	14	÷	13	
ER40UP.D.15	15	÷	14	
ER40UP.D.16	16	÷	15	
ER40UP.D.17	17	÷	16	
ER40UP.D.18	18	÷	17	
ER40UP.D.19	19	÷	18	
ER40UP.D.20	20	÷	19	
ER40UP.D.21	21	÷	20	
ER40UP.D.22	22	÷	21	
ER40UP.D.23	23	÷	22	
ER40UP.D.24	24	÷	23	
ER40UP.D.25	25	÷	24	
ER40UP.D.26	26	÷	25	

**Cassetta per pinze / Kit in Box**

CODICE	EUR
BX.ER40UP-23	
D. 4 - 5 - 6 - 7 - 8 - 9 - 10 - 11 - 12 - 13 - 14	
D. 15 - 16 - 17 - 18 - 19 - 20 - 21 - 22 - 23 - 24	
D. 25 - 26	



**Pinze tenuta refrigerante con inserti in neoprene ERXG**  
Rubber sealed collets



**Max. 40 BAR**

**ERXG-11**

↗ 0,010 ÷ 0,015

CODICE	CAPACITÀ	EUR
ERXG11.D.3	3	
ERXG11.D.3.5	3.5	
ERXG11.D.4	4	
ERXG11.D.4.5	4.5	
ERXG11.D.5	5	
ERXG11.D.5.5	5.50	
ERXG11.D.6	6	
ERXG11.D.6.5	6.5	
ERXG11.D.7	7	
ERXG11.D.8	8	

**ERXG-16**

↗ 0,010 ÷ 0,015

CODICE	CAPACITÀ	EUR
ERXG16.D.3	3	
ERXG16.D.4	4	
ERXG16.D.5	5	
ERXG16.D.6	6	
ERXG16.D.7	7	
ERXG16.D.8	8	
ERXG16.D.9	9	
ERXG16.D.10	10	

**Cassetta per pinze / Kit in Box**

CODICE	EUR
BX.ERXG11-8	
D. 3 - 4 - 5 - 6 - 7 - 8 - 9 - 10	



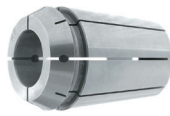
**Cassetta per pinze / Kit in Box**

CODICE	EUR
BX.ERXG16-8	
D. 3 - 4 - 5 - 6 - 7 - 8 - 9 - 10	



DISPONIBILI MEZZE MISURE, CONTATTA IL COMMERCIALE PER MAGGIORI DETTAGLI.  
HALE SIZES AVAILABLE CALL YOUR DEALER FOR MORE DETAILS

**Pinze tenuta refrigerante con inserti in neoprene ERXG**  
Rubber sealed collets



**Max. 40 BAR**

**ERXG-20**

↗ 0,010 ÷ 0,015

CODICE	CAPACITÀ	EUR
ERXG20.D.3	3	
ERXG20.D.4	4	
ERXG20.D.5	5	
ERXG20.D.6	6	
ERXG20.D.7	7	
ERXG20.D.8	8	
ERXG20.D.9	9	
ERXG20.D.10	10	
ERXG20.D.11	11	
ERXG20.D.12	12	
ERXG20.D.13	13	

**ERXG-25**

↗ 0,010 ÷ 0,015

CODICE	CAPACITÀ	EUR
ERXG25.D.3	3	
ERXG25.D.4	4	
ERXG25.D.5	5	
ERXG25.D.6	6	
ERXG25.D.7	7	
ERXG25.D.8	8	
ERXG25.D.9	9	
ERXG25.D.10	10	
ERXG25.D.11	11	
ERXG25.D.12	12	
ERXG25.D.13	13	
ERXG25.D.14	14	
ERXG25.D.15	15	
ERXG25.D.16	16	

**Cassetta per pinze / Kit in Box**

CODICE	EUR
BX.ERXG20-11	
D. 3 - 4 - 5 - 6 - 7 - 8 - 9 - 10 - 11 - 12 - 13	



**Kit di pinze / Kit in Tray**

CODICE	EUR
TY.ERXG25-6	
D. 4 - 6 - 8 - 10 - 12 - 16	



**Cassetta per pinze / Kit in Box**

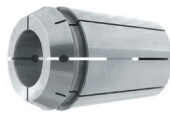
CODICE	EUR
BX.ERXG25-14	
D. 3 - 4 - 5 - 6 - 7 - 8 - 9 - 10 - 11 - 12 - 13 - 14	
D. 15 - 16	



DISPONIBILI MEZZE MISURE, CONTATTA IL COMMERCIALE PER MAGGIORI DETTAGLI.  
HALE SIZES AVAILABLE CALL YOUR DEALER FOR MORE DETAILS

**Pinze tenuta refrigerante con inserti in neoprene ERXG**

Rubber sealed collets



**Max. 40 BAR**

**ERXG-32**

↗ 0,010 ÷ 0,015

CODICE	CAPACITÀ	EUR
ERXG32.D.3	3	
ERXG32.D.4	4	
ERXG32.D.5	5	
ERXG32.D.6	6	
ERXG32.D.7	7	
ERXG32.D.8	8	
ERXG32.D.9	9	
ERXG32.D.10	10	
ERXG32.D.11	11	
ERXG32.D.12	12	
ERXG32.D.13	13	
ERXG32.D.14	14	
ERXG32.D.15	15	
ERXG32.D.16	16	
ERXG32.D.17	17	
ERXG32.D.18	18	
ERXG32.D.19	19	
ERXG32.D.20	20	

**ERXG-40**

↗ 0,010 ÷ 0,015

CODICE	CAPACITÀ	EUR
ERXG40.D.3	3	
ERXG40.D.4	4	
ERXG40.D.5	5	
ERXG40.D.6	6	
ERXG40.D.7	7	
ERXG40.D.8	8	
ERXG40.D.9	9	
ERXG40.D.10	10	
ERXG40.D.11	11	
ERXG40.D.12	12	
ERXG40.D.13	13	
ERXG40.D.14	14	
ERXG40.D.15	15	
ERXG40.D.16	16	
ERXG40.D.17	17	
ERXG40.D.18	18	
ERXG40.D.19	19	
ERXG40.D.20	20	
ERXG40.D.21	21	
ERXG40.D.22	22	
ERXG40.D.23	23	
ERXG40.D.24	24	
ERXG40.D.25	25	
ERXG40.D.26	26	

**Kit di pinze / Kit in Tray**

CODICE	EUR
TY.ERXG32-6	
D. 6 - 8 - 10 - 12 - 16 - 20	



**Cassetta per pinze / Kit in Box**

CODICE	EUR
BX.ERXG32-18	
D. 3 - 4 - 5 - 6 - 7 - 8 - 9 - 10 - 11 - 12 - 13 - 14	
D. 15 - 16 - 17 - 18 - 19 - 20	

Fig. 2



**Cassetta per pinze / Kit in Box**

CODICE	EUR
TY.ERXG40-7	KIT Fig. 1
BX.ERXG40-23	BOX Fig. 2
D. 3 - 4 - 5 - 6 - 7 - 8 - 9 - 10 - 11 - 12 - 13 - 14 - 15	
D. 16 - 17 - 18 - 19 - 20 - 21 - 22 - 23 - 24 - 25 - 26	

Fig. 1



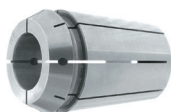
Fig. 2



DISPONIBILI MEZZE MISURE, CONTATTA IL COMMERCIALE PER MAGGIORI DETTAGLI.  
HALE SIZES AVAILABLE CALL YOUR DEALER FOR MORE DETAILS

**Pinze tenuta refrigerante con inserti in neoprene ERXG**

Rubber sealed collets


**Max. 40 BAR**
**ERXG-50**

↗ 0,010 ÷ 0,015

CODICE	CAPACITÀ	EUR
ERXG50.D.10	10	
ERXG50.D.12	12	
ERXG50.D.14	14	
ERXG50.D.16	16	
ERXG50.D.18	18	
ERXG50.D.20	20	
ERXG50.D.22	22	
ERXG50.D.24	24	
ERXG50.D.25	25	
ERXG50.D.26	26	
ERXG50.D.28	28	
ERXG50.D.30	30	
ERXG50.D.32	32	
ERXG50.D.34	34	

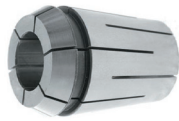
**Cassetta per pinze / Kit in Box**

CODICE	EUR
BX.ERXG50-12	
D. 12 - 14 - 16 - 18 - 20 - 22 - 24 - 26 - 28 - 30	
D. 32 - 34	





**Pinze a tenuta meccanica**  
Solid sealed collets



**Max. 130 BAR**

**ER25-SSC**

↗0,008

CODICE	CAPACITÀ	EUR
ERC25SSC.D.3	3	
ERC25SSC.D.4	4	
ERC25SSC.D.5	5	
ERC25SSC.D.6	6	
ERC25SSC.D.7	7	
ERC25SSC.D.8	8	
ERC25SSC.D.9	9	
ERC25SSC.D.10	10	
ERC25SSC.D.11	11	
ERC25SSC.D.12	12	
ERC25SSC.D.13	13	
ERC25SSC.D.14	14	
ERC25SSC.D.15	15	
ERC25SSC.D.16	16	

**ER40-SSC**

↗0,008

CODICE	CAPACITÀ	EUR
ERC40SSC.D.4	4	
ERC40SSC.D.5	5	
ERC40SSC.D.6	6	
ERC40SSC.D.7	7	
ERC40SSC.D.8	8	
ERC40SSC.D.9	9	
ERC40SSC.D.10	10	
ERC40SSC.D.11	11	
ERC40SSC.D.12	12	
ERC40SSC.D.13	13	
ERC40SSC.D.14	14	
ERC40SSC.D.15	15	
ERC40SSC.D.16	16	
ERC40SSC.D.17	17	
ERC40SSC.D.18	18	
ERC40SSC.D.19	19	
ERC40SSC.D.20	20	
ERC40SSC.D.21	21	
ERC40SSC.D.22	22	
ERC40SSC.D.23	23	
ERC40SSC.D.24	24	
ERC40SSC.D.25	25	
ERC40SSC.D.26	26	

**ER32-SSC**

↗0,008

CODICE	CAPACITÀ	EUR
ERC32SSC.D.3	3	
ERC32SSC.D.4	4	
ERC32SSC.D.5	5	
ERC32SSC.D.6	6	
ERC32SSC.D.7	7	
ERC32SSC.D.8	8	
ERC32SSC.D.9	9	
ERC32SSC.D.10	10	
ERC32SSC.D.11	11	
ERC32SSC.D.12	12	
ERC32SSC.D.13	13	
ERC32SSC.D.14	14	
ERC32SSC.D.15	15	
ERC32SSC.D.16	16	
ERC32SSC.D.17	17	
ERC32SSC.D.18	18	
ERC32SSC.D.19	19	
ERC32SSC.D.20	20	

**SU RICHIESTA**

**ER16-SSC**

**ERC16-SSC**

**ER20-SSC**

**ERC25-SSC**

**Cassetta per pinze / Kit in Box**

CODICE	EUR
BX.ERC25SSC-14	
D. 3 - 4 - 5 - 6 - 7 - 8 - 9 - 10 - 12 - 13 - 14 - 15 - 16	
BX.ERC32SSC-18	
D. 3 - 4 - 5 - 6 - 7 - 8 - 9 - 10 - 11 - 12 - 13 - 14	
D. 15 - 16 - 17 - 18 - 19 - 20	
BX.ERC40SSC-23	
D. 4 - 5 - 6 - 7 - 8 - 9 - 10 - 12 - 13 - 14 - 15 - 16	
D. 17 - 18 - 19 - 20 - 21 - 22 - 23 - 24 - 25 - 26	



**Pinze con fori di lubrificazione**  
Collets with coolant holes



**ER16-JET**

↗ 0,010 ÷ 0,015

CODICE	CAPACITÀ	EUR
ERC16JET.D.3	3	
ERC16JET.D.4	4	
ERC16JET.D.5	5	
ERC16JET.D.6	6	
ERC16JET.D.7	7	

**ER20-JET**

↗ 0,010 ÷ 0,015

CODICE	CAPACITÀ	EUR
ERC20JET.D.3	3	
ERC20JET.D.4	4	
ERC20JET.D.5	5	
ERC20JET.D.6	6	
ERC20JET.D.7	7	
ERC20JET.D.8	8	
ERC20JET.D.9	9	
ERC20JET.D.10	10	

**ER25-JET**

↗ 0,010 ÷ 0,015

CODICE	CAPACITÀ	EUR
ERC25JET.D.3	3	
ERC25JET.D.4	4	
ERC25JET.D.5	5	
ERC25JET.D.6	6	
ERC25JET.D.7	7	
ERC25JET.D.8	8	
ERC25JET.D.9	9	
ERC25JET.D.10	10	
ERC25JET.D.11	11	
ERC25JET.D.12	12	
ERC25JET.D.13	13	
ERC25JET.D.14	14	

**ER32-JET**

↗ 0,010 ÷ 0,015

CODICE	CAPACITÀ	EUR
ERC32JET.D.3	3	
ERC32JET.D.4	4	
ERC32JET.D.5	5	
ERC32JET.D.6	6	
ERC32JET.D.7	7	
ERC32JET.D.8	8	
ERC32JET.D.9	9	
ERC32JET.D.10	10	
ERC32JET.D.11	11	
ERC32JET.D.12	12	
ERC32JET.D.13	13	
ERC32JET.D.14	14	
ERC32JET.D.15	15	
ERC32JET.D.16	16	
ERC32JET.D.17	17	
ERC32JET.D.18	18	
ERC32JET.D.19	19	
ERC32JET.D.20	20	

**ER40-JET**

↗ 0,010 ÷ 0,015

CODICE	CAPACITÀ	EUR
ERC40JET.D.4	4	
ERC40JET.D.5	5	
ERC40JET.D.6	6	
ERC40JET.D.7	7	
ERC40JET.D.8	8	
ERC40JET.D.9	9	
ERC40JET.D.10	10	
ERC40JET.D.11	11	
ERC40JET.D.12	12	
ERC40JET.D.13	13	
ERC40JET.D.14	14	
ERC40JET.D.15	15	
ERC40JET.D.16	16	
ERC40JET.D.17	17	
ERC40JET.D.18	18	
ERC40JET.D.19	19	
ERC40JET.D.20	20	
ERC40JET.D.21	21	
ERC40JET.D.22	22	
ERC40JET.D.23	23	
ERC40JET.D.24	24	
ERC40JET.D.25	25	
ERC40JET.D.26	26	

**Cassetta per pinze**

Kit in Box

CODICE		EUR
BX.ERC16JET-5	BOX Fig. 1	
D. 3 - 4 - 5 - 6 - 7		
BX.ERC20JET-8	BOX Fig. 1	
D. 3 - 4 - 5 - 6 - 7 - 8 - 9 - 10		
BX.ERC25JET-12	BOX Fig. 1	
D. 3 - 4 - 5 - 6 - 7 - 8 - 9 - 10 - 12 - 13 - 14		
BX.ERC32JET-18	BOX Fig. 2	
D. 3 - 4 - 5 - 6 - 7 - 8 - 9 - 10 - 11 - 12 - 13 - 14 - 15		
D. 16 - 17 - 18 - 19 - 20		
BX.ERC40JET-23		
D. 4 - 5 - 6 - 7 - 8 - 9 - 10 - 12 - 13 - 14 - 15 - 16 - 17		
D. 18 - 19 - 20 - 21 - 22 - 23 - 24 - 25 - 26		

**Fig. 1**

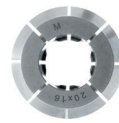
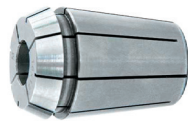


**Fig. 2**



**Pinze con quadro e fori di lubrificazione**

Tapping collets with internal square and coolant holes


**ERX-16M JET**

CODICE	M	Ø	X	∇	EUR
ERX16MJET.D.3.5	M3	3.5	x	2.7	
ERX16MJET.D.4	M3.5	4	x	3	
ERX16MJET.D.4.5	M4	4.5	x	3.4	
ERX16MJET.D.6	M5-6-8	6	x	4.9	
ERX16MJET.D.7	M7-10	7	x	5.5	
ERX16MJET.D.8	M8	8	x	6.2	

**ERX-25M JET**

CODICE	M	Ø	X	∇	EUR
ERX25MJET.D.3.5	M3	3.5	x	2.7	
ERX25MJET.D.4	M3.5	4	x	3	
ERX25MJET.D.4.5	M4	4.5	x	3.4	
ERX25MJET.D.6	M5-6-8	6	x	4.9	
ERX25MJET.D.7	M7-10	7	x	5.5	
ERX25MJET.D.8	M8	8	x	6.2	
ERX25MJET.D.9	M9-12	9	x	7	
ERX25MJET.D.10	M10	10	x	8	
ERX25MJET.D.11	M14	11	x	9	
ERX25MJET.D.12	M16	12	x	9	

**ERX-20M JET**

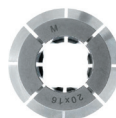
CODICE	M	Ø	X	∇	EUR
ERX20MJET.D.3.5	M3	3.5	x	2.7	
ERX20MJET.D.4	M3.5	4	x	3	
ERX20MJET.D.4.5	M4	4.5	x	3.4	
ERX20MJET.D.6	M5-6-8	6	x	4.9	
ERX20MJET.D.7	M7-10	7	x	5.5	
ERX20MJET.D.8	M8	8	x	6.2	
ERX20MJET.D.9	M9-12	9	x	7	
ERX20MJET.D.10	M10	10	x	8	

**ERX-32M JET**

CODICE	M	Ø	X	∇	EUR
ERX32MJET.D.4.5	M4	4.5	x	3.4	
ERX32MJET.D.6	M5-6-8	6	x	4.9	
ERX32MJET.D.7	M7-10	7	x	5.5	
ERX32MJET.D.8	M8	8	x	6.2	
ERX32MJET.D.9	M9-12	9	x	7	
ERX32MJET.D.10	M10	10	x	8	
ERX32MJET.D.11	M14	11	x	9	
ERX32MJET.D.12	M16	12	x	9	
ERX32MJET.D.14	M18	14	x	11	
ERX32MJET.D.16	M20	16	x	12	

### Pinze portamaschi con quadro

Tapping collets with internal square



#### ERX-16M

CODICE	M	Ø	X	∇	EUR
ERX16M.D.3.5	M3	3.5	x	2.7	
ERX16M.D.4	M3.5	4	x	3	
ERX16M.D.4.5	M4	4.5	x	3.4	
ERX16M.D.5	M5	5	x	4	
ERX16M.D.6	M5-6-8	6	x	4.9	
ERX16M.D.6.3	M6-8	6.3	x	5	
ERX16M.D.7	M7-10	7	x	5.5	
ERX16M.D.8	M8	8	x	6.2	
ERX16M.D.9	M12	9	x	7	
ERX16M.D.10	M10	10	x	8	

#### ERX-32M

CODICE	M	Ø	X	∇	EUR
ERX32M.D.3.5	M3	3.5	x	2.7	
ERX32M.D.4	M3.5	4	x	3	
ERX32M.D.4.5	M4	4.5	x	3.4	
ERX32M.D.6	M5-6-8	6	x	4.9	
ERX32M.D.7	M7-10	7	x	5.5	
ERX32M.D.8	M8	8	x	6.2	
ERX32M.D.9	M9-12	9	x	7	
ERX32M.D.10	M10	10	x	8	
ERX32M.D.11	M14	11	x	9	
ERX32M.D.12	M16	12	x	9	
ERX32M.D.14	M18	14	x	11	
ERX32M.D.16	M20	16	x	12	
ERX32M.D.18	M24	18	x	14.5	
ERX32M.D.20	M27	20	x	16	

#### ERX-20M

CODICE	M	Ø	X	∇	EUR
ERX20M.D.3.5	M3	3.5	x	2.7	
ERX20M.D.4	M3.5	4	x	3	
ERX20M.D.4.5	M4	4.5	x	3.4	
ERX20M.D.5	M5	5	x	4	
ERX20M.D.6	M5-6-8	6	x	4.9	
ERX20M.D.6.3	M6-8	6.3	x	5	
ERX20M.D.7	M7-10	7	x	5.5	
ERX20M.D.8	M8	8	x	6.2	
ERX20M.D.9	M9-12	9	x	7	
ERX20M.D.10	M10	10	x	8	
ERX20M.D.11	M14	11	x	9	
ERX20M.D.12	M16	12	x	9	

#### ERX-40M

CODICE	M	Ø	X	∇	EUR
ERX40M.D.6	M5-6-8	6	x	4.9	
ERX40M.D.7	M7-10	7	x	5.5	
ERX40M.D.8	M8	8	x	6.2	
ERX40M.D.9	M9-12	9	x	7	
ERX40M.D.10	M10	10	x	8	
ERX40M.D.11	M14	11	x	9	
ERX40M.D.12	M16	12	x	9	
ERX40M.D.14	M18	14	x	11	
ERX40M.D.16	M20	16	x	12	
ERX40M.D.18	M24	18	x	14.5	
ERX40M.D.20	M27	20	x	16	
ERX40M.D.22	M30	22	x	18	
ERX40M.D.25	M33	25	x	20	

#### ERX-25M

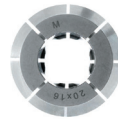
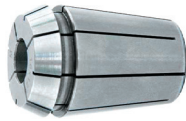
CODICE	M	Ø	X	∇	EUR
ERX25M.D.3.5	M3	3.5	x	2.7	
ERX25M.D.4	M3.5	4	x	3	
ERX25M.D.4.5	M4	4.5	x	3.4	
ERX25M.D.5	M5	5	x	4	
ERX25M.D.6	M5-6-8	6	x	4.9	
ERX25M.D.6.3	M6-8	6.3	x	5	
ERX25M.D.7	M7-10	7	x	5.5	
ERX25M.D.8	M8	8	x	6.2	
ERX25M.D.9	M9-12	9	x	7	
ERX25M.D.10	M10	10	x	8	
ERX25M.D.11	M14	11	x	9	
ERX25M.D.12	M6	12	x	9	
ERX25M.D.14	M18	14	x	11	
ERX25M.D.16	M20	16	x	12	

#### ERX-50M

CODICE	M	Ø	X	∇	EUR
ERX50M.D.8	M8	8	x	6.2	
ERX50M.D.9	M9-12	9	x	7	
ERX50M.D.10	M10	10	x	8	
ERX50M.D.11	M14	11	x	9	
ERX50M.D.12	M16	12	x	9	
ERX50M.D.14	M18	14	x	11	
ERX50M.D.16	M20	16	x	12	
ERX50M.D.18	M24	18	x	14.5	
ERX50M.D.20	M27	20	x	16	
ERX50M.D.22-24	M30	22	x	18	
ERX50M.D.25	M33	25	x	20	
ERX50M.D.28	M36	28	x	22	
ERX50M.D.32	M39-42	32	x	24	

**Pinze portamaschi con quadro a tenuta del refrigerante**

Rubber sealed tapping collets with internal square


**ERXG-16M**

CODICE	M	Ø	X	∇	EUR
ERXG16M.D.4	M3.5	4	x	3	
ERXG16M.D.4.5	M4	4.5	x	3.4	
ERXG16M.D.5	M5	5	x	4	
ERXG16M.D.6	M5-6-8	6	x	4.9	
ERXG16M.D.7	M7-10	7	x	5.5	
ERXG16M.D.8	M8	8	x	6.2	

**ERXG-32M**

CODICE	M	Ø	X	∇	EUR
ERXG32M.D.4.5	M4	4.5	x	3.4	
ERXG32M.D.5	M5	5	x	4	
ERXG32M.D.6	M5-6-8	6	x	4.9	
ERXG32M.D.7	M7-10	7	x	5.5	
ERXG32M.D.8	M8	8	x	6.2	
ERXG32M.D.9	M9-12	9	x	7	
ERXG32M.D.10	M10	10	x	8	
ERXG32M.D.11	M14	11	x	9	
ERXG32M.D.12	M16	12	x	9	
ERXG32M.D.14	M18	14	x	11	
ERXG32M.D.16	M20	16	x	12	

**ERXG-20M**

CODICE	M	Ø	X	∇	EUR
ERXG20M.D.4	M3.5	4	x	3	
ERXG20M.D.4.5	M4	4.5	x	3.4	
ERXG16M.D.5	M5	5	x	4	
ERXG20M.D.6	M5-6-8	6	x	4.9	
ERXG20M.D.7	M7-10	7	x	5.5	
ERXG20M.D.8	M8	8	x	6.2	
ERXG20M.D.9	M9-12	9	x	7	
ERXG20M.D.10	M10	10	x	8	

**ERXG-40M**

CODICE	M	Ø	X	∇	EUR
ERXG40M.D.6	M5-6-8	6	x	4.9	
ERXG40M.D.7	M7-10	7	x	5.5	
ERXG40M.D.8	M8	8	x	6.2	
ERXG40M.D.9	M9-12	9	x	7	
ERXG40M.D.10	M10	10	x	8	
ERXG40M.D.11	M14	11	x	9	
ERXG40M.D.12	M16	12	x	9	
ERXG40M.D.14	M18	14	x	11	
ERXG40M.D.16	M20	16	x	12	
ERXG40M.D.18	M24	18	x	14.5	
ERXG40M.D.20	M27	20	x	16	

**ERXG-25M**

CODICE	M	Ø	X	∇	EUR
ERXG25M.D.4	M3.5	4	x	3	
ERXG25M.D.4.5	M4	4.5	x	3.4	
ERXG16M.D.5	M5	5	x	4	
ERXG25M.D.6	M5-6-8	6	x	4.9	
ERXG25M.D.7	M7-10	7	x	5.5	
ERXG25M.D.8	M8	8	x	6.2	
ERXG25M.D.9	M9-12	9	x	7	
ERXG25M.D.10	M10	10	x	8	
ERXG25M.D.11	M14	11	x	9	
ERXG25M.D.12	M16	12	x	9	

**Pinze con oscillazione radiale per alesatori**  
 Floating collets for reamers


**ER16-PA**

CODICE	Ø Alesatore	EUR
ERC16PA.D.2	2	
ERC16PA.D.3	3	
ERC16PA.D.4	4	
ERC16PA.D.5	5	
ERC16PA.D.6	6	
ERC16PA.D.7	7	

**ER20-PA**

CODICE	Ø Alesatore	EUR
ERC20PA.D.3	3	
ERC20PA.D.4	4	
ERC20PA.D.5	5	
ERC20PA.D.6	6	
ERC20PA.D.7	7	
ERC20PA.D.8	8	

**ER25-PA**

CODICE	Ø Alesatore	EUR
ERC25PA.D.3	3	
ERC25PA.D.4	4	
ERC25PA.D.5	5	
ERC25PA.D.6	6	
ERC25PA.D.7	7	
ERC25PA.D.8	8	
ERC25PA.D.9	9	
ERC25PA.D.10	10	

**ER32-PA**

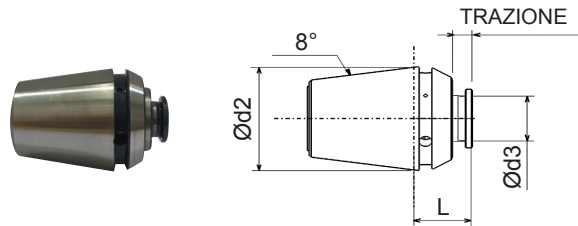
CODICE	Ø Alesatore	EUR
ERC32PA.D.4	4	
ERC32PA.D.5	5	
ERC32PA.D.6	6	
ERC32PA.D.7	7	
ERC32PA.D.8	8	
ERC32PA.D.9	9	
ERC32PA.D.10	10	
ERC32PA.D.11	11	
ERC32PA.D.12	12	
ERC32PA.D.13	13	

**ER40-PA**

CODICE	Ø Alesatore	EUR
ERC40PA.D.4	4	
ERC40PA.D.5	5	
ERC40PA.D.6	6	
ERC40PA.D.7	7	
ERC40PA.D.8	8	
ERC40PA.D.9	9	
ERC40PA.D.10	10	
ERC40PA.D.11	11	
ERC40PA.D.12	12	
ERC40PA.D.13	13	
ERC40PA.D.14	14	
ERC40PA.D.15	15	
ERC40PA.D.16	16	

**Pinze con trazione a cambio rapido**

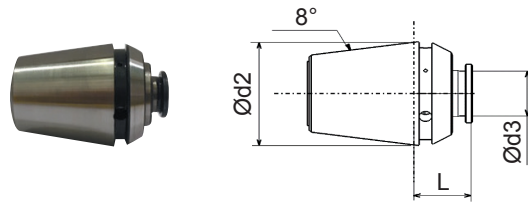
Quick change traction ERT collets


**ERT**

CODICE	DIN 371	Ød2	L	Ød3	SQUARE QUADRO	TRAZIONE	EUR
9.ERT25 2.8 x 2.1	M2.5	25	17.5	2.8	2.1	8	
9.ERT25 3.5 x 2.7	M3			3.5	2.7		
9.ERT25 4.5 x 3.4	M4			4.5	3.4		
9.ERT25 5 x 4	M5			5	4		
9.ERT25 6 x 4.9	M6			6	4.9		
9.ERT25 6.3 x 5	M6			6.3	5		
9.ERT25 7 x 5.5	M10			7	5.5		
9.ERT25 7.1 x 5.6	M7			7.1	5.6		
9.ERT25 8 x 6.2	M8			8	6.2		
9.ERT25 8 x 6.3	M8			8	6.3		
9.ERT25 9 x 7	M12	32	18.5	9	7	10	
9.ERT25 9 x 7.1	M12			9	7.1		
9.ERT25 10 x 8	M10			10	8		
9.ERT32 2.8 x 2.1	M2.5			2.8	2.1		
9.ERT32 3.5 x 2.7	M3			3.5	2.7		
9.ERT32 4.5 x 3.4	M4			4.5	3.4		
9.ERT32 5 x 4	M5			5	4		
9.ERT32 6 x 4.9	M6			6.5	4.9		
9.ERT32 6.3 x 5	M6			6.3	5		
9.ERT32 7 x 5.5	M12			7	5.5		
9.ERT32 7.1 x 5.6	M7	7.1	5.6				
9.ERT32 8 x 6.2	M8	8	6.2				
9.ERT32 8 x 6.3	M8	8	6.3				
9.ERT32 9 x 7	M12	9	7				
9.ERT32 9 x 7.1	M9	9	7.1				
9.ERT32 10 x 8	M10	10	8				
9.ERT32 11 x 9	M14	11	9				

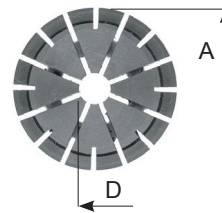
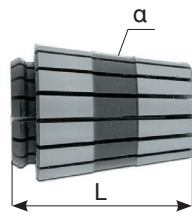


**Pinze fisse a cambio rapido**  
 Quick change traction ERT collets


**ERF**

CODICE	DIN 371	Ød2	L	Ød3	SQUARE QUADRO	EUR
9.ERF25 2.8 x 2.1	M2.5	25	17.5	2.8	2.1	
9.ERF25 3.5 x 2.7	M3			3.5	2.7	
9.ERF25 4.5 x 3.4	M4			4.5	3.4	
9.ERF25 5 x 4	M5			5	4	
9.ERF25 6 x 4.9	M6			6	4.9	
9.ERF25 6.3 x 5	M6			6.3	5	
9.ERF25 7 x 5.5	M10			7	5.5	
9.ERF25 7.1 x 5.6	M7			7.1	5.6	
9.ERF25 8 x 6.2	M8			8	6.2	
9.ERF25 8 x 6.3	M8			8	6.3	
9.ERF25 9 x 7.1	M9			9	7.1	
9.ERF25 9 x 7	M12			9	7	
9.ERF32 2.8 x 2.1	M2.5	32	18.5	2.8	2.1	
9.ERF32 3.5 x 2.7	M3			3.5	2.7	
9.ERF32 4.5 x 3.4	M4			4.5	3.4	
9.ERF32 5 x 4	M5			5	4	
9.ERF32 6 x 4.9	M6			6	4.9	
9.ERF32 6.3 x 5	M6			6.3	5	
9.ERF32 7 x 5.5	M12			7	5.5	
9.ERF32 7.1 x 5.6	M7			7.1	5.6	
9.ERF32 8 x 6.2	M8			8	6.2	
9.ERF32 8 x 6.3	M8			8	6.3	
9.ERF32 9 x 7	M12			9	7	
9.ERF32 9 x 7.1	M9			9	7.1	
9.ERF32 10 x 8	M10	10	8			
9.ERF32 11 x 9	M14	11	9			

**Pinze**  
Collets



**ERCD**

CODICE	D mm min-max	CAPACITÀ DI SERRAGGIO mm	A	$\alpha$ AT3	L
ERCD16	1 ÷ 10	0.5 ÷ 1 mm	17	8°	24
ERCD20	1 ÷ 13	0.5 ÷ 1 mm	21	8°	30.5
ERCD25	1 ÷ 16	0.5 ÷ 1 mm	26	8°	34
ERCD32	2 ÷ 20	0.5 ÷ 1 mm	33	8°	40
ERCD40	3 ÷ 30	1 mm	41	8°	46

**Tolleranza della rotazione delle pinze ERCD**

ERCD collet concentricity specification

d1 - h5		I12	S max
Minimo	Massimo		
mm	mm	mm	mm
1	1.6	6	0.010
1.6	3	10	0.010
3	7	16	0.010
7	10	25	0.010
10	18	40	0.015
18	26	50	0.015
26	40	60	0.015

- Il valore della concentricità si controlla sul  $\varnothing$  nominale delle pinze.
- This runout accuracy is valid only for the nominal size of the collets.
- Si montano sui mandrini portapinza ISO DIN 15488 ( ER – ERC ) utilizzando l'apposita ghiera ETS.
- La ghiera chiudipinza del sistema ETS lavora sul piano anteriore della pinza ( fig.1 ) riducendo l'errore di concentricità e rendendo la forza di serraggio uniforme su tutta la lunghezza di presa pinza
- Adaptable to all toolholders that mount ER /ERC collets by using ETS nuts.
- ETS nut works axially on collets flat ( Fig.1 ) increasing precision and uniforming clamping force on whole lenght of bore.

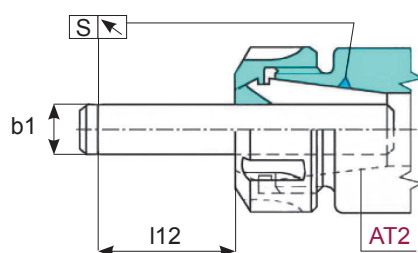
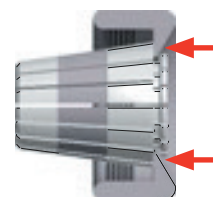


Fig. 1



**Pinze di precisione**  
 Precision collets

**Pinze di precisione**  
 Precision collets

**ERCD16**

0,010

CODICE	CAPACITÀ			EUR
ERCD16.D.2	2	÷	1	
ERCD16.D.3	3	÷	2	
ERCD16.D.4	4	÷	3	
ERCD16.D.5	5	÷	4	
ERCD16.D.6	6	÷	5	
ERCD16.D.7	7	÷	6	
ERCD16.D.8	8	÷	7	
ERCD16.D.9	9	÷	8	
ERCD16.D.10	10	÷	9	

\* ERCD = Compatibile con pinze ERC DIN/6499

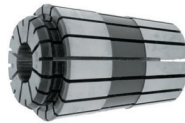
**ERCD20**

0,010

CODICE	CAPACITÀ			EUR
ERCD20.D.2	2	÷	1	
ERCD20.D.3	3	÷	2	
ERCD20.D.4	4	÷	3	
ERCD20.D.5	5	÷	4	
ERCD20.D.6	6	÷	5	
ERCD20.D.7	7	÷	6	
ERCD20.D.8	8	÷	7	
ERCD20.D.9	9	÷	8	
ERCD20.D.10	10	÷	9	
ERCD20.D.11	11	÷	10	
ERCD20.D.12	12	÷	11	
ERCD20.D.13	13	÷	12	

**Pinze di precisione**  
Precision collets

**Pinze di precisione**  
Precision collets



**ERCD25**

↗ 0,010

CODICE	CAPACITÀ			EUR
ERCD25.D.2	2	÷	1	
ERCD25.D.3	3	÷	2	
ERCD25.D.4	4	÷	3	
ERCD25.D.5	5	÷	4	
ERCD25.D.6	6	÷	5	
ERCD25.D.7	7	÷	6	
ERCD25.D.8	8	÷	7	
ERCD25.D.9	9	÷	8	
ERCD25.D.10	10	÷	9	
ERCD25.D.11	11	÷	10	
ERCD25.D.12	12	÷	11	
ERCD25.D.13	13	÷	12	
ERCD25.D.14	14	÷	13	
ERCD25.D.15	15	÷	14	
ERCD25.D.16	16	÷	15	

✱ ERCD = Compatibile con pinze ERC DIN/6499

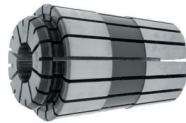
**ERCD32**

↗ 0,010 ÷ 0,015

CODICE	CAPACITÀ			EUR
ERCD32.D.3	3	÷	2	
ERCD32.D.4	4	÷	3	
ERCD32.D.5	5	÷	4	
ERCD32.D.6	6	÷	5	
ERCD32.D.7	7	÷	6	
ERCD32.D.8	8	÷	7	
ERCD32.D.9	9	÷	8	
ERCD32.D.10	10	÷	9	
ERCD32.D.11	11	÷	10	
ERCD32.D.12	12	÷	11	
ERCD32.D.13	13	÷	12	
ERCD32.D.14	14	÷	13	
ERCD32.D.15	15	÷	14	
ERCD32.D.16	16	÷	15	
ERCD32.D.17	17	÷	16	
ERCD32.D.18	18	÷	17	
ERCD32.D.19	19	÷	18	
ERCD32.D.20	20	÷	19	

**Pinze di precisione**

Precision collets



**ERCD40**

0,010 ÷ 0,015

CODICE	CAPACITÀ			EUR
ERCD40.D.4	4	÷	3	
ERCD40.D.5	5	÷	4	
ERCD40.D.6	6	÷	5	
ERCD40.D.7	7	÷	6	
ERCD40.D.8	8	÷	7	
ERCD40.D.9	9	÷	8	
ERCD40.D.10	10	÷	9	
ERCD40.D.11	11	÷	10	
ERCD40.D.12	12	÷	11	
ERCD40.D.13	13	÷	12	
ERCD40.D.14	14	÷	13	

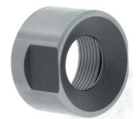
CODICE	CAPACITÀ			EUR
ERCD40.D.15	15	÷	14	
ERCD40.D.16	16	÷	15	
ERCD40.D.17	17	÷	16	
ERCD40.D.18	18	÷	17	
ERCD40.D.19	19	÷	18	
ERCD40.D.20	20	÷	19	
ERCD40.D.21	21	÷	20	
ERCD40.D.22	22	÷	21	
ERCD40.D.23	23	÷	22	
ERCD40.D.24	24	÷	23	
ERCD40.D.25	25	÷	24	
ERCD40.D.26	26	÷	25	

\* ERCD = Compatibile con pinze ERC DIN/6499

**Ghiere MINI**

NUTS MINI

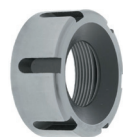
CODICE	E	M x P	*Nm	EUR
G16ETSM	22	M19x1	12 ÷ 24	
G20ETSM	28	M24x1	16 ÷ 28	
G25ETSM	34	M30x1	22 ÷ 32	



**Ghiere STANDARD**

NUTS STANDARD

CODICE	D	M x P	*Nm	EUR
G16ETS	32	M22x1.5	15 ÷ 50	
G20ETS	35	M25x1.5	16 ÷ 75	
G25ETS	42	M32x1.5	25 ÷ 100	
G32ETS	50	M40x1.5	25 ÷ 140	
G40ETS	63	M50x1.5	60 ÷ 170	



**Chiavi STANDARD**

STANDARD wrenches

CODICE	EUR
CH16S	
CH20S	
CH25S	
CH32S	
CH40S	



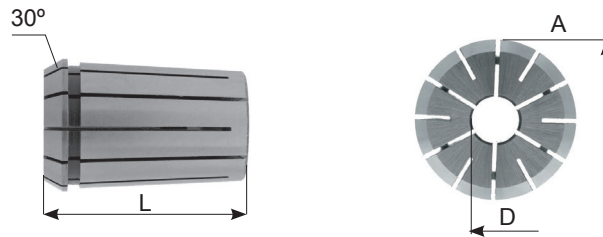
**Chiavi per Ghiere esagonali**

Wrenches for Hexagonal nuts

CODICE	EUR
CH.E14	
CH.E17	
CH.E19	
CH.E22	
CH.E25	
CH.E27	
CH.E28	
CH.E30	
CH.E32	
CH.E34	
CH.E38	



**Pinze**  
Collets



**EOC**

<b>CODICE</b>	<b>D mm min-max</b>	<b>CAPACITÀ DI SERRAGGIO mm</b>	<b>A</b>	<b>L</b>
EOC6B - 400E	1 ÷ 6	0.5 mm	11.50	21
EOC8B - 401E	1 ÷ 8	0.5 mm	14.50	26
EOC10B - 404E	1 ÷ 10	0.5 mm	17.20	30
EOC12B - 407E	1 ÷ 12	0.5 mm	19.80	34
EOC16B - 415E	2 ÷ 16	0.5 mm	25.50	40
EOC20B - 4541E	2 ÷ 20	0.5 mm	29.80	45
EOC25B - 462E	2 ÷ 25	0.5 mm	35.05	52
EOC32B - 467E	3 ÷ 32	0.5 mm	43.70	60
EOC40B - 468E	8 ÷ 40	0.5 mm	52.20	68

– Il grado di concentricità delle pinze EOC – DIN6388 B di precisione standard e contenuti in 0.010 – 0.015 mm.  
Adate per lavorazioni in cui si richiede una maggior forza di chiusura rispetto alle DIN 6499.  
Superficie finita con rugosità inferiore a Rz 2,5.

– Concentricity of Collets EOC System –DIN 6388 B is contained in 0.010 – 0.015 mm.  
Recommended for application in which you require a greater clamping force than ER collet DIN 6499.  
Surface finished Rz 2,5.

**Pinze di precisione STANDARD**

Standard precision collets



**EOC16B**

↙0,010 ÷ 0,015

<b>CODICE</b>	<b>CAPACITÀ</b>			<b>EUR</b>
EOC16B.D.2	2	÷	1.5	
EOC16B.D.3	3	÷	2.5	
EOC16B.D.4	4	÷	3.5	
EOC16B.D.5	5	÷	4.5	
EOC16B.D.6	6	÷	5.5	
EOC16B.D.7	7	÷	6.5	
EOC16B.D.8	8	÷	7.5	
EOC16B.D.9	9	÷	8.5	
EOC16B.D.10	10	÷	9.5	
EOC16B.D.11	11	÷	10.5	
EOC16B.D.12	12	÷	11.5	
EOC16B.D.13	13	÷	12.5	
EOC16B.D.14	14	÷	13.5	
EOC16B.D.15	15	÷	14.5	
EOC16B.D.16	16	÷	15.5	

DISPONIBILI IN ALTRE MISURE, CONTATTA IL COMMERCIALE PER MAGGIORI DETTAGLI.  
AVAILABLE IN OTHERS MEASURES, CALL YOUR DEALER FOR MORE DETAILS.

**Pinze di precisione STANDARD**

Standard precision collets



**EOC25B**

✓0,010 ÷ 0,015

<b>CODICE</b>	<b>CAPACITÀ</b>			<b>EUR</b>
EOC25B.D.2	2	÷	1.5	
EOC25B.D.3	3	÷	2.5	
EOC25B.D.4	4	÷	3.5	
EOC25B.D.5	5	÷	4.5	
EOC25B.D.6	6	÷	5.5	
EOC25B.D.7	7	÷	6.5	
EOC25B.D.8	8	÷	7.5	
EOC25B.D.9	9	÷	8.5	
EOC25B.D.10	10	÷	9.5	
EOC25B.D.11	11	÷	10.5	
EOC25B.D.12	12	÷	11.5	
EOC25B.D.13	13	÷	12.5	
EOC25B.D.14	14	÷	13.5	
EOC25B.D.15	15	÷	14.5	
EOC25B.D.16	16	÷	15.5	
EOC25B.D.17	17	÷	16.5	
EOC25B.D.18	18	÷	17.5	
EOC25B.D.19	19	÷	18.5	
EOC25B.D.20	20	÷	19.5	
EOC25B.D.21	21	÷	20.5	
EOC25B.D.22	22	÷	21.5	
EOC25B.D.23	23	÷	22.5	
EOC25B.D.24	24	÷	23.5	
EOC25B.D.25	25	÷	24.5	



**Pinze di precisione STANDARD**

Standard precision collets



**EOC32B**

↙ 0,010 ÷ 0,015

<b>CODICE</b>	<b>CAPACITÀ</b>			<b>EUR</b>
EOC32B.D.3	3	÷	2.5	
EOC32B.D.4	4	÷	3.5	
EOC32B.D.5	5	÷	4.5	
EOC32B.D.6	6	÷	5.5	
EOC32B.D.7	7	÷	6.5	
EOC32B.D.8	8	÷	7.5	
EOC32B.D.9	9	÷	8.5	
EOC32B.D.10	10	÷	9.5	
EOC32B.D.11	11	÷	10.5	
EOC32B.D.12	12	÷	11.5	
EOC32B.D.13	13	÷	12.5	
EOC32B.D.14	14	÷	13.5	
EOC32B.D.15	15	÷	14.5	
EOC32B.D.16	16	÷	15.5	
EOC32B.D.17	17	÷	16.5	
EOC32B.D.18	18	÷	17.5	
EOC32B.D.19	19	÷	18.5	
EOC32B.D.20	20	÷	19.5	
EOC32B.D.21	21	÷	20.5	
EOC32B.D.22	22	÷	21.5	
EOC32B.D.23	23	÷	22.5	
EOC32B.D.24	24	÷	23.5	
EOC32B.D.25	25	÷	24.5	
EOC32B.D.26	26	÷	25.5	
EOC32B.D.27	27	÷	26.5	
EOC32B.D.28	28	÷	27.5	
EOC32B.D.29	29	÷	28.5	
EOC32B.D.30	30	÷	29.5	
EOC32B.D.31	31	÷	30.5	
EOC32B.D.32	32	÷	31.5	

**Ghiere STANDARD**

Friction bearing nuts without

**GOC**

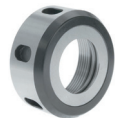
CODICE	FAM	D	M x P	Nm	EUR
G16OCC	1	43	M33 x 1.5	85	
G20OCC		50	M42 x 2.0	-	
G25OCC		60	M48 x 2.0	140	
G25OCL <i>Filetto sinistro</i>		60	M48 x 2.0	140	
G32OCC		72	M60 x 2.5	170	
G40OCC		85	M68 x 2.5		


**Ghiere senza sfere**

EOC nuts without friction bearing

**GOCS**

CODICE	FAM	D	M x P	Nm	EUR
G16OCS	1	43	M33 x 1.5	130	
G25OCS		60	M48 x 2	200	
G32OCS		72	M60 x 2.5	220	

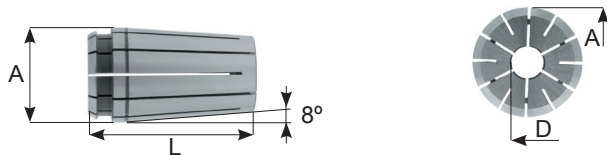

**Chiavi a settore  
 per ghiere chiudipinza**

Hook wrenches for clamping nuts

CODICE	FAM	EUR
CH6GOC	2	
CH8GOC		
CH10GOC		
CH12GOC		
CH16GOC		
CH20GOC	1	
CH25GOC		
CH32GOC		
CH40GOC		



**Pinze Tipo "TG"**  
"TG" Collets Type

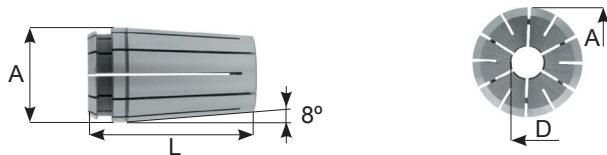


**TG75**

CODICE	FAM	A	L	CAPACITÀ DI SERRAGGIO	EUR
75TG030M					
75TG040M					
75TG050M					
75TG060M					
75TG070M					
75TG080M					
75TG090M					
75TG100M					
75TG110M	2	27	46.9	0.5 mm	
75TG120M					
75TG130M					
75TG140M					
75TG150M					
75TG160M					
75TG170M					
75TG180M					
75TG190M					
75TG200M					

DISPONIBILI PINZE TG75 E TG100 IN HP  
AVAILABLE COLLETS TG75 AND TG100 IN HP

**Pinze Tipo "TG"**  
"TG" Collets Type

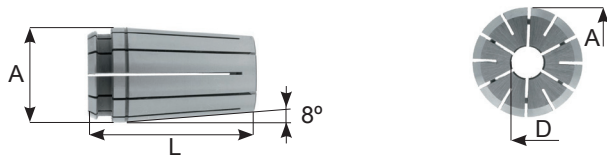


**TG100**

CODICE	FAM	A	L	CAPACITÀ DI SERRAGGIO	EUR
100TG030M					
100TG040M					
100TG050M					
100TG060M					
100TG070M					
100TG080M					
100TG090M					
100TG100M					
100TG110M					
100TG120M					
100TG130M					
100TG140M	2	35	60.4	0.5 mm	
100TG150M					
100TG160M					
100TG170M					
100TG180M					
100TG190M					
100TG200M					
100TG210M					
100TG220M					
100TG230M					
100TG240M					
100TG250M					

DISPONIBILI PINZE TG75 E TG100 IN HP  
AVAILABLE COLLETS TG75 AND TG100 IN HP

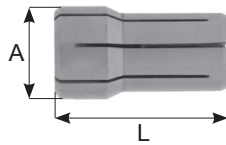
**Pinze Tipo "TG"**  
"TG" Collets Type



**TG150**

CODICE	FAM	A	L	CAPACITÀ DI SERRAGGIO	EUR
150TG120M					
150TG130M					
150TG140M					
150TG150M					
150TG160M					
150TG180M					
150TG190M					
150TG200M					
150TG210M					
150TG220M					
150TG230M					
150TG260M	2	50.08	76.2	0.5 mm	
150TG270M					
150TG280M					
150TG290M					
150TG300M					
150TG310M					
150TG320M					
150TG330M					
150TG340M					
150TG350M					
150TG360M					
150TG380M					

DISPONIBILI PINZE TG75 E TG100 IN HP  
AVAILABLE COLLETS TG75 AND TG100 IN HP

**Pinze Tipo "DA"**  
 "DA" Collets Type


CODICE	FAM	CAPACITÀ			A	L	CAPACITÀ DI SERRAGGIO
DA300-416E	1-2	1.5	÷	6.0	9.52	25.4	0.5 mm
DA200-417E		1.5	÷	10.0	13.69	30	
DA100-418E		2.0	÷	14.5	19.53	36.3	
DA180-419E		2.0	÷	20.0	26.03	41.4	

**DA**

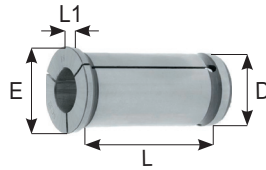
CODICE	FAM	CAPACITÀ			A	L	CAPACITÀ DI SERRAGGIO	EUR
DA300.D1	2	1.5	÷	6.0	9.52	25.4	0.5 mm	
DA300.D1.5								
DA300.D2								
DA300.D2.5								
DA300.D3								
DA300.D3.5								
DA300.D4								
DA300.D4.5								
DA300.D5								
DA300.D5.5								
DA300.D6								
DA200.D1	2	1.5	÷	10.0	13.69	30	0.5 mm	
DA200.D1.5								
DA200.D2								
DA200.D2.5								
DA200.D3								
DA200.D3.5								
DA200.D4								
DA200.D4.5								
DA200.D5								
DA200.D5.5								
DA200.D6								
DA200.D6.5								
DA200.D7								
DA200.D7.5								
DA200.D8								
DA200.D8.5								
DA200.D9								
DA200.D9.5								
DA200.D10								

**DA**

CODICE	FAM	CAPACITÀ			A	L	CAPACITÀ DI SERRAGGIO	EUR
DA100.D2	2	2.0	÷	14.5	19.53	36.3	0.5 mm	
DA100.D2.5								
DA100.D3								
DA100.D3.5								
DA100.D4								
DA100.D4.5								
DA100.D5								
DA100.D5.5								
DA100.D6								
DA100.D6.5								
DA100.D7								
DA100.D7.5								
DA100.D8								
DA100.D8.5								
DA100.D9								
DA100.D9.5								
DA100.D10								
DA100.D10.5								
DA100.D11								
DA100.D11.5								
DA100.D12								
DA100.D12.5								
DA100.D13								
DA100.D13.5								
DA100.D14								
DA100.D14.5								
DA180.D2	2	2.0	÷	2.0	26.03	41.4	0.5 mm	
DA180.D2.5								
DA180.D3								
DA180.D3.5								
DA180.D4								
DA180.D4.5								
DA180.D5								
DA180.D5.5								
DA180.D6								
DA180.D6.5								
DA180.D7								
DA180.D7.5								
DA180.D8								
DA180.D8.5								
DA180.D9								
DA180.D9.5								
DA180.D10								
DA180.D10.5								
DA180.D11								
DA180.D11.5								
DA180.D12								
DA180.D12.5								
DA180.D13								
DA180.D13.5								
DA180.D14								
DA180.D14.5								
DA180.D15								
DA180.D15.5								
DA180.D16								
DA180.D16.5								
DA180.D17								
DA180.D17.5								
DA180.D18								
DA180.D18.5								
DA180.D19								
DA180.D19.5								
DA180.D20								

**Pinze cilindriche per mandrini a forte serraggio**

Collets for power milling chucks


**3SR20**

CODICE	FAM	D	E	L	L1	EUR
3SR20.D.3						
3SR20.D.4						
3SR20.D.5						
3SR20.D.6						
3SR20.D.7						
3SR20.D.8						
3SR20.D.9						
3SR20.D.10	2	20	25	50	5	
3SR20.D.11						
3SR20.D.12						
3SR20.D.13						
3SR20.D.14						
3SR20.D.15						
3SR20.D.16						
3SR20.D.17						
3SR20.D.18						

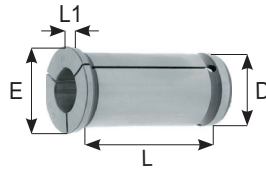
**3SR25**

CODICE	FAM	D	E	L	L1	EUR
3SR25.D.3						
3SR25.D.4						
3SR25.D.5						
3SR25.D.6						
3SR25.D.7						
3SR25.D.8						
3SR25.D.9						
3SR25.D.10						
3SR25.D.11						
3SR25.D.12	2	25	30	55	5	
3SR25.D.13						
3SR25.D.14						
3SR25.D.15						
3SR25.D.16						
3SR25.D.17						
3SR25.D.18						
3SR25.D.19						
3SR25.D.20						
3SR25.D.21						



**Pinze cilindriche per mandrini a forte serraggio**

Collets for power milling chucks

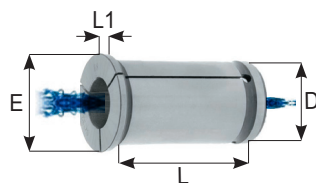


**3SR32**

CODICE	FAM	D	E	L	L1	EUR
3SR32.D.3						
3SR32.D.4						
3SR32.D.5						
3SR32.D.6						
3SR32.D.7						
3SR32.D.8						
3SR32.D.9						
3SR32.D.10						
3SR32.D.11						
3SR32.D.12						
3SR32.D.13						
3SR32.D.14						
3SR32.D.15						
3SR32.D.16	2	32	37	60	5	
3SR32.D.17						
3SR32.D.18						
3SR32.D.19						
3SR32.D.20						
3SR32.D.21						
3SR32.D.22						
3SR32.D.23						
3SR32.D.24						
3SR32.D.25						
3SR32.D.26						
3SR32.D.27						
3SR32.D.28						
3SR32.D.29						
3SR32.D.30						

**Pinze cilindriche a forte serraggio idrauliche a tenuta refrigerante**

Collets for hydraulic expansion chucks



**4SR20**

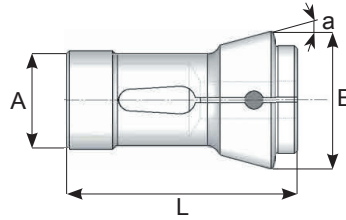
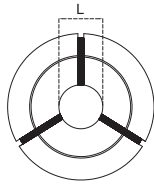
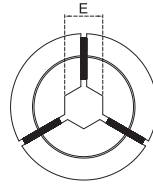
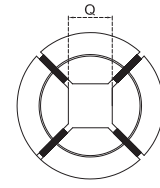
CODICE	FAM	D	E	L	L1	EUR
4SR20.D.4						
4SR20.D.5						
4SR20.D.6						
4SR20.D.8	1	20	25	50	5	
4SR20.D.10						
4SR20.D.12						
4SR20.D.16						

**4SR32**

CODICE	FAM	D	E	L	L1	EUR
4SR32.D.6						
4SR32.D.8						
4SR32.D.10						
4SR32.D.12	1	32	37	64	5	
4SR32.D.16						
4SR32.D.20						
4SR32.D.25						

**Pinze DIN/6343**

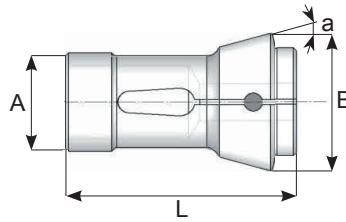
Collets for Single - Spindle lathes


**Tipo (Tonda)**  
 Type (Round)

**Tipo (Esagonali)**  
 Type (Hexagonal)

**Tipo (Quadre)**  
 Type (Square)


Tonda	Esag.	Quadre	A	B	L	a				Einheits
1072	-	-	6,0	10,0	30,0	15°	4,5	-	-	I00E
5293	-	-	7,0	10,7	26,0	15°	5,0	-	-	1020E
0721	-	-	8,0	12,0	42,0	16°	6,5	-	-	101E
0725	0949	5000	10,0	15,5	47,5	20°	8,0	6,0	5,0	109E
5232	-	-	10,0	16,0	43,0	15°	7,0	-	-	110E
0749	-	-	12,0	17,0	27,0	20°	10,0	-	-	-
1132	-	-	12,0	18,0	64,0	16°	10,0	-	-	-
0940	0941	0943	13,0	19,0	64,0	16°	10,0	8,0	7,0	116E
0740	0741	0742	14,0	18,0	46,0	13°	10,0	9,0	8,0	117E
0722	0723	0724	15,0	21,0	64,0	16°	12,0	10,0	9,0	120E
5308	5309	5310	15,0	22,0	47,0	20°	11,0	9,0	8,0	121E
0913	0914	0915	16,0	22,0	55,0	15°	12,5	11,0	9,0	123E
0954	0955	0956	20,0	26,0	54,0	15°	16,0	12,0	10,0	136E
5299	5300	5301	20,0	27,5	60,0	15°	17,0	15,0	12,0	1299E
0937	0938	0939	20,0	28,0	67,0	16°	16,0	14,0	11,0	138E
0743	0744	0745	22,0	28,0	67,0	13°	16,0	14,0	12,0	139E
0705	0707	0706	22,0	30,0	55,0	15°	18,0	14,0	12,0	140E
5302	5303	5304	22,0	32,0	66,0	16°	17,0	14,0	12,0	1323E
0671	0672	0673	25,0	31,0	54,0	15°	21,0	18,0	15,0	143E
0717	0719	0718	25,0	35,0	77,0	16°	20,0	17,0	15,0	145E
0746	0747	0748	26,0	32,0	67,0	13°	20,0	18,0	15,0	146E
0901	0902	0903	27,0	38,0	72,7	15°	22,0	20,0	16,0	147E
0713	0715	0714	28,0	38,0	70,0	15°	23,0	20,0	17,0	148E
0931	0932	0933	30,0	38,0	65,0	15°	26,0	22,0	18,0	1446E
0727	0728	0729	30,0	42,0	80,0	16°	25,0	23,0	19,0	157E
0701	0703	0702	32,0	45,0	75,0	15°	26,0	24,0	20,0	161E
0615	0616	0617	35,0	43,0	70,0	15°	25,0	24,0	20,0	162E
0764	0766	0765	35,0	48,0	80,0	15°	30,0	27,0	22,0	163E
0970	0972	0973	37,0	47,0	92,0	16°	32,0	27,0	22,0	1536E
0837	0839	0838	38,0	50,3	86,0	15°	32,0	28,0	25,0	-
0919	0920	0921	38,1	49,0	107,5	15°	32,0	27,0	22,0	164E
0861	0862	0863	42,0	55,0	94,0	15°	37,0	32,0	26,0	171E
0709	0711	0710	48,0	60,0	94,0	15°	42,0	38,0	30,0	173E
0666	0667	0668	52,0	63,0	92,0	15°	46,0	38,0	32,0	-
2424	2425	2426	58,0	70,0	94,0	15°	52,0	45,0	36,0	177E
0759	0760	0761	66,0	84,0	110,0	15°	60,0	52,0	42,0	185E
0647	0648	0649	80,0	98,0	115,0	15°	70,0	60,0	50,0	-
0826	0829	0831	88,0	106,0	115,0	15°	80,0	68,0	56,0	190E
0851	0852	0853	90,0	107,0	130,0	15°	80,0	68,0	56,0	193E
0681	0683	0684	95,0	117,0	125,0	15°	80,0	68,0	56,0	-
0959	0962	0964	115,0	135,0	140,0	15°	100,0	86,0	70,0	-

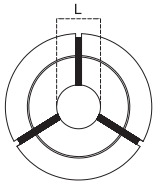
**Pinze DIN/6343**

Workholding collets



**Tipo (Liscio)**

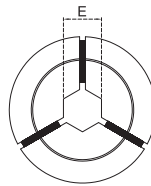
Type (Smooth)



CODICE	EUR
140E.D1L	
140E.D2L	
140E.D3L	
140E.D4L	
140E.D5L	
140E.D6L	
140E.D7L	

**Tipo (Esagonali)**

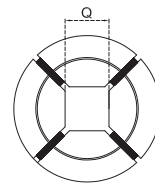
Type (Hexagonal)



CODICE	EUR
140E.E4	
140E.E5	
140E.E6	
140E.E7	
140E.E8	
140E.E9	
140E.E10	
140E.E11	
140E.E12	
140E.E13	
140E.E14	
140E.E15	

**Tipo (Quadre)**

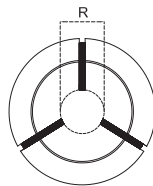
Type (Square)



CODICE	EUR
140E.Q4	
140E.Q5	
140E.Q6	
140E.Q7	
140E.Q8	
140E.Q9	
140E.Q10	
140E.Q11	
140E.Q12	

**Tipo rigato**

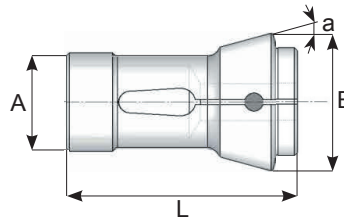
Type (Grooved)



CODICE	EUR
140E.D8R	
140E.D9R	
140E.D10R	
140E.D11R	
140E.D12R	
140E.D13R	
140E.D14R	
140E.D15R	
140E.D16R	
140E.D17R	
140E.D18R	

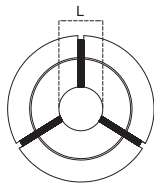
**Pinze DIN/6343**

Workholding collets



**Tipo (Liscio)**

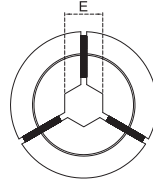
Type (Smooth)



CODICE	EUR
161E.D1L	
161E.D2L	
161E.D3L	
161E.D4L	
161E.D5L	
161E.D6L	
161E.D7L	

**Tipo (Esagonali)**

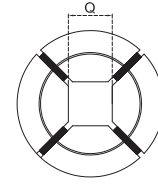
Type (Hexagonal)



CODICE	EUR
161E.E4	
161E.E5	
161E.E6	
161E.E7	
161E.E8	
161E.E9	
161E.E10	
161E.E11	
161E.E12	
161E.E13	
161E.E14	
161E.E15	
161E.E16	
161E.E17	
161E.E18	
161E.E19	
161E.E20	
161E.E21	
161E.E22	

**Tipo (Quadre)**

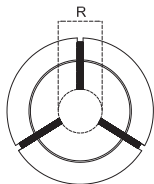
Type (Square)



CODICE	EUR
161E.Q4	
161E.Q5	
161E.Q6	
161E.Q7	
161E.Q8	
161E.Q9	
161E.Q10	
161E.Q11	
161E.Q12	
161E.Q13	
161E.Q14	
161E.Q15	
161E.Q16	
161E.Q17	
161E.Q18	

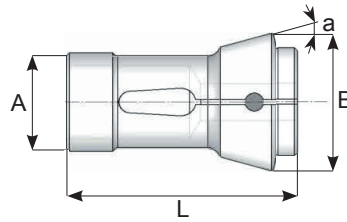
**Tipo (Rigato)**

Type (Grooved)

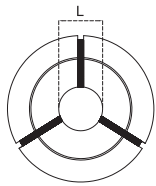


CODICE	EUR
161E.D8R	
161E.D9R	
161E.D10R	
161E.D11R	
161E.D12R	
161E.D13R	
161E.D14R	
161E.D15R	
161E.D16R	
161E.D17R	
161E.D18R	
161E.D20R	
161E.D21R	
161E.D22R	
161E.D23R	
161E.D24R	
161E.D25R	
161E.D26R	

**Pinze DIN/6343**  
Workholding collets

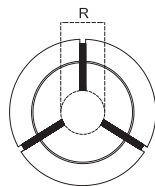


**Tipo (Liscio)**  
Type (Smooth)

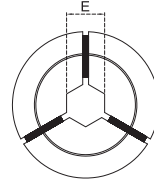


CODICE	EUR
173E.D3L	
173E.D4L	
173E.D5L	
173E.D6L	
173E.D7L	
173E.D8R	
173E.D9R	
173E.D10R	
173E.D11R	
173E.D12R	
173E.D13R	
173E.D14R	
173E.D15R	
173E.D16R	
173E.D17R	
173E.D18R	
173E.D19R	
173E.D20R	
173E.D21R	
173E.D22R	
173E.D23R	
173E.D24R	
173E.D25R	
173E.D26R	
173E.D27R	
173E.D28R	
173E.D29R	
173E.D30R	
173E.D31R	
173E.D32R	
173E.D33R	
173E.D34R	
173E.D35R	
173E.D36R	
173E.D37R	
173E.D38R	
173E.D39R	
173E.D40R	
173E.D41R	
173E.D42R	

**Tipo (Rigato)**  
Type (Grooved)

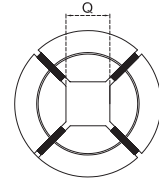


**Tipo (Esagonali)**  
Type (Hexagonal)



CODICE	EUR
173E.E4	
173E.E5	
173E.E6	
173E.E7	
173E.E8	
173E.E9	
173E.E10	
173E.E11	
173E.E12	
173E.E13	
173E.E14	
173E.E15	
173E.E16	
173E.E17	
173E.E18	
173E.E19	
173E.E20	
173E.E21	
173E.E22	
173E.E23	
173E.E24	
173E.E25	
173E.E26	
173E.E27	
173E.E28	
173E.E29	
173E.E30	
173E.E31	
173E.E32	
173E.E33	
173E.E34	
173E.E35	
173E.E36	

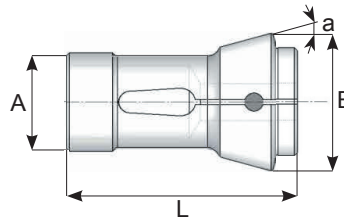
**Tipo (Quadre)**  
Type (Square)



CODICE	EUR
173E.Q4	
173E.Q5	
173E.Q6	
173E.Q7	
173E.Q8	
173E.Q9	
173E.Q10	
173E.Q11	
173E.Q12	
173E.Q13	
173E.Q14	
173E.Q15	
173E.Q16	
173E.Q17	
173E.Q18	
173E.Q19	
173E.Q20	
173E.Q21	
173E.Q22	
173E.Q23	
173E.Q24	
173E.Q25	
173E.Q26	
173E.Q27	
173E.Q28	
173E.Q29	
173E.Q30	

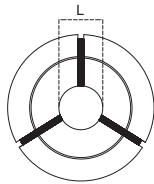
**Pinze DIN/6343**

Workholding collets



**Tipo (Liscio)**

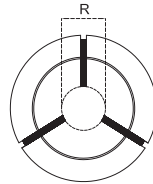
Type (Smooth)



CODICE	EUR
177E.D5L	
177E.D6L	
177E.D7L	

**Tipo (Rigato)**

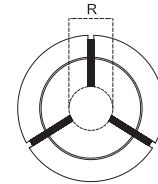
Type (Grooved)



CODICE	EUR
177E.D8R	
177E.D9R	
177E.D10R	
177E.D11R	
177E.D12R	
177E.D13R	
177E.D14R	
177E.D15R	
177E.D16R	
177E.D17R	
177E.D18R	
177E.D19R	
177E.D20R	
177E.D21R	
177E.D22R	
177E.D23R	
177E.D24R	
177E.D25R	
177E.D26R	
177E.D27R	
177E.D28R	
177E.D29R	
177E.D30R	
177E.D31R	
177E.D32R	
177E.D33R	
177E.D34R	
177E.D35R	
177E.D36R	
177E.D37R	
177E.D38R	
177E.D39R	

**Tipo (Rigato)**

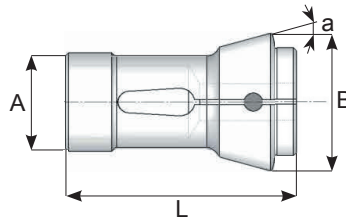
Type (Grooved)



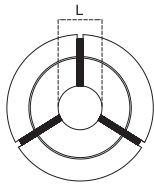
CODICE	EUR
177E.D40R	
177E.D41R	
177E.D42R	
177E.D43R	
177E.D44R	
177E.D45R	
177E.D46R	
177E.D47R	
177E.D48R	
177E.D49R	
177E.D50R	
177E.D51R	
177E.D52R	

**Pinze DIN/6343**

Workholding collets

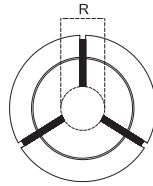


**Tipo (Liscio)**  
Type (Smooth)



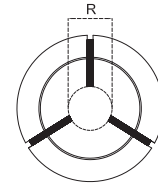
CODICE	EUR
185E.D6L	
185E.D7L	

**Tipo (Rigato)**  
Type (Grooved)



CODICE	EUR
185E.D8R	
185E.D9R	
185E.D10R	
185E.D11R	
185E.D12R	
185E.D13R	
185E.D14R	
185E.D15R	
185E.D16R	
185E.D17R	
185E.D18R	
185E.D19R	
185E.D20R	
185E.D21R	
185E.D22R	
185E.D23R	
185E.D24R	
185E.D25R	
185E.D26R	
185E.D27R	
185E.D28R	
185E.D29R	
185E.D30R	
185E.D31R	
185E.D32R	
185E.D33R	
185E.D34R	
185E.D35R	
185E.D36R	
185E.D37R	
185E.D38R	
185E.D39R	

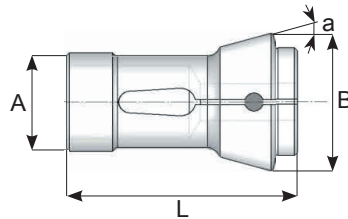
**Tipo (Rigato)**  
Type (Grooved)



CODICE	EUR
185E.D40R	
185E.D41R	
185E.D42R	
185E.D43R	
185E.D44R	
185E.D45R	
185E.D46R	
185E.D47R	
185E.D48R	
185E.D49R	
185E.D50R	
185E.D51R	
185E.D52R	
185E.D53R	
185E.D54R	
185E.D55R	
185E.D56R	
185E.D57R	
185E.D58R	
185E.D59R	
185E.D60R	

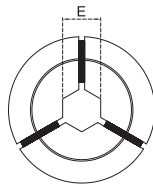
**Pinze DIN/6343**

Workholding collets



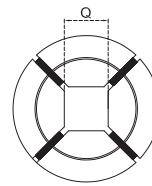
**Tipo (Esagonali)**

Type (Hexagonal)



**Tipo (Quadre)**

Type (Square)



CODICE	EUR
185E.E10	
185E.E11	
185E.E12	
185E.E13	
185E.E14	
185E.E15	
185E.E16	
185E.E17	
185E.E18	
185E.E19	
185E.E20	
185E.E21	
185E.E22	
185E.E23	
185E.E24	
185E.E25	
185E.E26	
185E.E27	
185E.E28	
185E.E29	
185E.E30	
185E.E31	
185E.E32	
185E.E33	
185E.E34	
185E.E35	
185E.E36	
185E.E37	
185E.E38	
185E.E39	
185E.E40	
185E.E41	
185E.E42	
185E.E43	
185E.E44	
185E.E45	
185E.E46	
185E.E47	
185E.E48	
185E.E49	
185E.E50	
185E.E51	
185E.E52	

CODICE	EUR
185E.Q12	
185E.Q13	
185E.Q14	
185E.Q15	
185E.Q16	
185E.Q17	
185E.Q18	
185E.Q19	
185E.Q20	
185E.Q21	
185E.Q22	
185E.Q23	
185E.Q24	
185E.Q25	
185E.Q26	
185E.Q27	
185E.Q28	
185E.Q29	
185E.Q30	
185E.Q31	
185E.Q32	
185E.Q33	
185E.Q34	
185E.Q35	
185E.Q36	
185E.Q37	
185E.Q38	
185E.Q39	
185E.Q40	
185E.Q41	
185E.Q42	