



BUSSOLE PORTAMASCHI - PINZE - TIRANTI E RICAMBI

ADAPTERS - COLLETS -
PULL STUDS AND
ACCESSORIES

1J



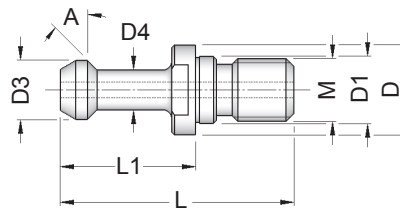
BUSSOLE PORTAMASCHI - PINZE - TIRANTI E RICAMBI

ADAPTERS - COLLETS - PULL STUDS AND ACCESSORIES



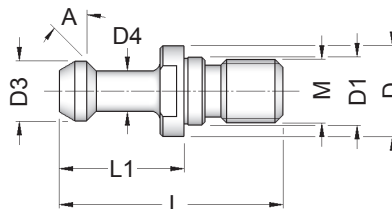
TIRANTI
PULL STUDS

1J

Tiranti con passaggio del refrigerante
 With coolant thru

BT

CODICE	FAM	A	M	L	L1	D	D1	D3	D4	EUR
PS.BT30.1F	1	45°	M12	43	23	16.5	12.5	11.0	7.0	
PS.BT30.2F		60°	M12	43	23	16.5	12.5	11.0	7.0	
PS.BT30.3F		90°	M12	43	23	16.5	12.5	11.0	7.0	
PS.BT40.1F		45°	M16	60	35	23.0	17.0	15.0	10.0	
PS.BT40.2F		60°	M16	60	35	23.0	17.0	15.0	10.0	
PS.BT40.3F		90°	M16	60	35	23.0	17.0	15.0	10.0	
PS.BT50.1F		45°	M24	85	45	38.0	25.0	23.0	17.0	
PS.BT50.2F		60°	M24	85	45	38.0	25.0	23.0	17.0	
PS.BT50.3F		90°	M24	85	45	38.0	25.0	23.0	17.0	

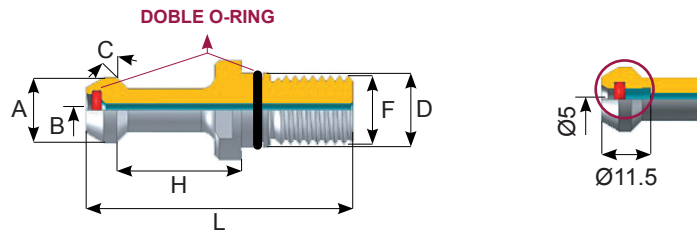
F = Foro

Tiranti senza passaggio del refrigerante
 Without coolant thru

BT

CODICE	FAM	A	M	L	L1	D	D1	D3	D4	F	EUR
PS.BT30.1SF	1	45°	M12	43	23	16.5	12.5	11	7	2.5	
PS.BT30.2SF		60°	M12	43	23	16.5	12.5	11	7	2.5	
PS.BT30.3SF		90°	M12	43	23	16.5	12.5	11	7	2.5	
PS.BT40.1SF		45°	M16	60	35	23	17	15	10	4	
PS.BT40.2SF		60°	M16	60	35	23	17	15	10	4	
PS.BT40.3SF		90°	M16	60	35	23	17	15	10	4	
PS.BT50.1SF		45°	M24	85	45	38	25	23	17	6	
PS.BT50.2SF		60°	M24	85	45	38	25	23	17	6	
PS.BT50.3SF		90°	M24	85	45	38	25	23	17	6	

Tiranti con doppio O-Ring per passaggio del refrigerante ad alta pressione

Sealed pull studs with double O-Ring for high pressure coolant



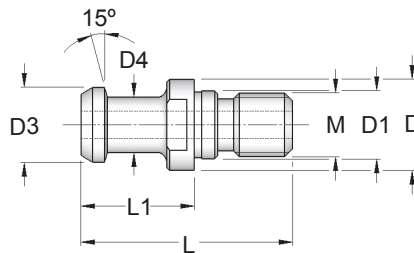
BT

CODICE	FAM	COD	F	C	D	A	H	L	B	FIG	EUR
PS.BT40.1.2OR	1	CD16012	M16	45°	17	15	28	60	3	1	
PS.BT40.2.2OR		CD16003	M16	45°	17	15	28	60	3	2	
PS.BT50.1.2OR		CD24026	M24	45°	25	23	35	85	6	1	
PS.BT50.2.2OR		CD24027	M24	60°	25	23	35	85	6	1	
PS.BT50.3.2OR		CD24024	M24	90°	25	23	35	85	6	1	

F = Foro

Tiranti con passaggio del refrigerante senza O-Ring esterno

Studs without external O-Ring Pull Studs with coolant bore



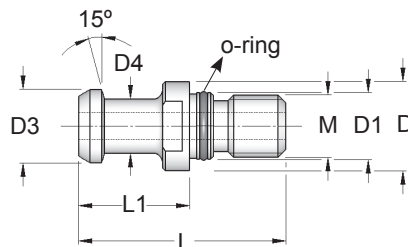
JIS-B/6339

CODICE	FAM	M	D	D1	D3	D4	L	L1	F	EUR
PS.JS30.F3	1	M12	16.5	12.5	12	8	43	23.4	4	

F = Foro senza O-Ring

Tiranti con passaggio del refrigerante

Pull stud bolts with coolant bore



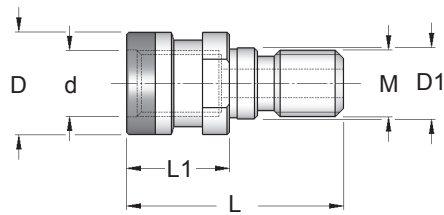
JIS-B/6339

CODICE	FAM	M	D	D1	D3	D4	L	L1	F	EUR
PS.JS40.F4	1	M16	23	17	19	14	54	29	4	
PS.JS40.F5		M16	23	17	19	14	54	29	7	
PS.JS50.F10		M24	38	25	28	21	74	34	10	

F = Foro

Tiranti con foro refrigerante (BT-DIN2080)

Pull stud with coolant thru (BT-DIN2080)

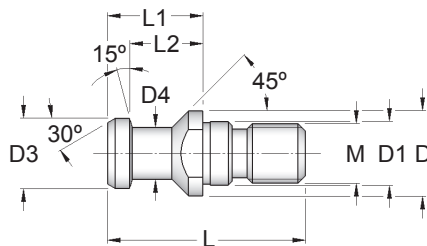


OTT

CODICE	FAM	M	d	D	D1	L1	L	EUR
PS.OTT40.TCF	1	M16	M16	25.3	17	25	53	
PS.OTT40.BTF		M16	M16	25.3	17	28	56	
PS.OTT50.TBF		M24	M24	39.6	25	25	65	

Tiranti senza foro refrigerante

Pull stud bolts without coolant thru

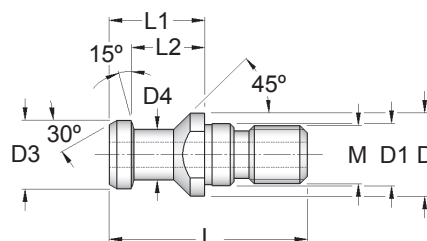


DIN/69872

CODICE	FAM	M	D	D1	D3	D4	L	L1	L2	EUR
PS.DIN30SF	1	M12	17	13	13	9	44	24	19	
PS.DIN40SF		M16	23	17	19	14	54	26	20	
PS.DIN50SF		M24	36	25	28	21	74	34	25	

Tiranti con foro refrigerante (DIN/69872)

Pull stud bolts with coolant thru (DIN/69872)



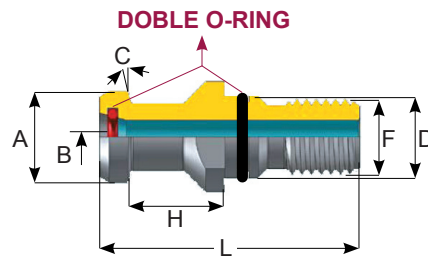
DIN/69872

CODICE	FAM	D	D1	D2	D3	D4	L	L1	L2	F	EUR
PS.DIN30F	1	M12	17	13	13	9	44	24	19	3.0	
PS.DIN40F		M16	23	17	19	14	54	26	20	7.0	
PS.DIN50F		M24	36	25	28	21	74	34	25	11.5	

F = Foro

Tiranti con doppio O-Ring per passaggio del refrigerante ad alta pressione

Sealed pull studs with double O-Ring for high pressure coolant



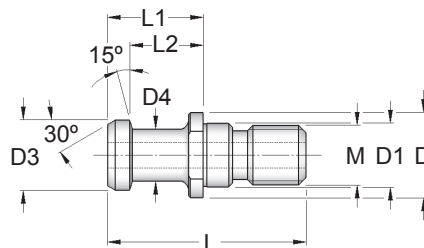
DIN/69872

CODICE	FAM	COD	F	C	D	A	H	L	B	EUR
PS.DIN40.2OR	1	CD16066	M16	15°	17	19	20	54	7	
PS.DIN40.2OR-BT		CD16067	M16	15°	17	19	23	54	7	
PS.DIN50.2OR		CD24017	M24	15°	25	28	25	74	11.5	

F = Foro

Tiranti senza foro refrigerante

Pull Stud bolts without coolant thru

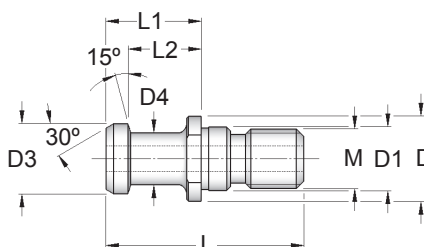


ISO 7388/2-A

CODICE	FAM	M	D	D1	D3	D4	L	L1	L2	EUR
PS.TC30SF	1	M12	16	13	12	8	44	24	19	
PS.TC40SF		M16	23	17	19	14	54	26	20	
PS.TC50SF		M24	36	25	28	21	74	34	25	

Tiranti con foro refrigerante

Pull stud bolts with coolant thru



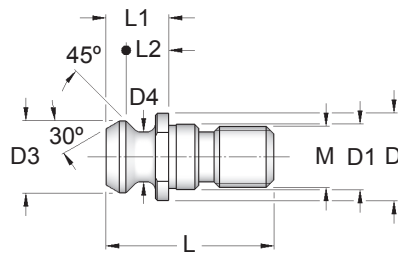
ISO 7388/2-A

CODICE	FAM	M	D	D1	D3	D4	L	L1	L2	F	EUR
PS.TC30F	1	M12	16	13	12	8	44	24	19	3.0	
PS.TC40F		M16	23	17	19	14	54	26	20	7.0	
PS.TC50F		M24	36	25	28	21	74	34	25	11.5	

F = Foro

Tiranti senza foro refrigerante

Pull stud bolts without coolant thru

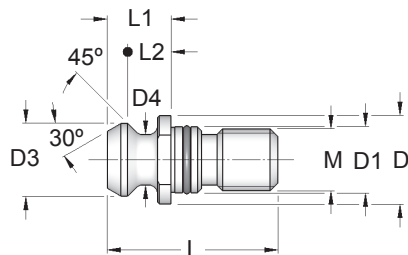


ISO 7388/2-B

CODICE	FAM	M	D	D1	D3	D4	L	L1	L2	EUR
PS.CAT30SF	1	M12	17.0	12.5	13.3	9.3	34.0	11.8	8.1	
PS.CAT40SF		M16	22.5	17.0	18.9	12.9	44.5	16.4	11.1	
PS.CAT50SF		M24	37.0	25.0	29.1	19.6	65.5	25.5	17.9	

Tiranti con foro refrigerante ad alta pressione

Pull stud bolts with watertight O-Ring for high pressure coolant



ISO 7388/2-B

CODICE	FAM	M	D	D1	D3	D4	L	L1	L2	EUR
PS.CAT30F	1	M16	22.5	17.0	18.9	12.9	44.5	16.4	11.1	
PS.CAT40F		M24	37.0	25.0	29.1	19.6	65.5	25.5	17.9	
PS.CAT50F		M24	37.0	25.0	29.1	19.6	65.5	25.5	17.9	

F = Foro